

Tool Information

Description: Auto Diagnostic Tool

Model: C68

Statement

This User Manual is for auto diagnostic tool C68. Without the prior written permission of Carecar (Short for “Shenzhen Carecar Technology Co., Ltd.”), any enterprise or person is NOT allowed to copy or store any data (electronic, mechanic, photo copying, recording, etc). The information contained herein is only used for Carecar C68. Carecar is not responsible for any damage by wrong usage as stated below.

Carecar shall not be liable for any part that has been abused, altered, used for a purpose other than for which it was intended, or used in a manner inconsistent with instructions regarding use. Other product names mentioned herein are for explaining how to use this device; the copyrights belong to the corresponding original enterprise.

TradeMark

Shenzhen Carecar Technology Co., Ltd. registered the trademark of “Carecar” in China and other countries. In any countries where Carecar trademarks, service marks, logos and company name is not registered, Carecar claims other right associated with unregistered trademarks, service marks, logos and company name. Without prior written permission, anyone is NOT allowed to use trademark, service mark, logo or company

name of Carecar.

Safety Precautions

To avoid personal injury, instrument damage and/or damage to your vehicle, please do not use this tool before reading this manual.

The safety messages cover situations Carecar is aware of. Carecar cannot evaluate or advise you all the possible hazards. You must be certain that any conditions or service procedures encountered do not jeopardize your personal safety. Always read your vehicle's service manual and follow its safety precautions before and during any test or service procedure. ALWAYS observe the following general safety precautions:

- Always perform automotive testing in a safe environment.
- When an engine is running, it produces carbon monoxide, a toxic and poisonous gas. To prevent serious injury or death from carbon monoxide poisoning, operate the vehicle ONLY in a well-ventilated area.
- To protect your eyes from propelled objects as well as hot or caustic liquids, always wear eye protection that meets ANSI standards.
- When an engine is running, many parts (such as the coolant fan, pulleys, fan belt, etc.) turn at high speed. To avoid serious injury, always be aware of moving parts. Keep a safe distance from these parts as well as other potentially moving objects.
- Engine parts become very hot when the engine is running. To prevent severe burns, avoid contact with hot engine parts.
- Before starting an engine for testing or troubleshooting, make sure the parking brake is engaged. Put the transmission in park (for

automatic transmission) or neutral (for manual transmission).
Block the drive wheels with suitable blocks.

- Connecting or disconnecting test equipment when the ignition is ON can damage test equipment and the vehicle's electronic components. Turn the ignition OFF before connecting the Scan Tool to or disconnecting the Scan Tool from the vehicle's Data Link Connector (DLC).
- To prevent damage to the on-board computer when taking vehicle electrical measurements, always use a digital multimeter with at least 10 megohms of impedance. Fuel and battery vapors are highly flammable.
- To prevent an explosion, keep all sparks, heated items and open flames away from the battery and fuel / fuel vapors. **DO NOT SMOKE NEAR THE VEHICLE DURING TESTING.**
- Don't wear loose clothing or jewelry when working on an engine. Loose clothing can become caught in the fan, pulleys, belts, etc. Jewelry is highly conductive, and can cause a severe burn if it makes contact between a power source and ground.
- Use extreme caution when working around the ignition coil, distributor cap, ignition wires and spark plugs. These components create hazardous voltages when the engine is running.
- Keep a fire extinguisher suitable for gasoline/chemical/electrical fires nearby
- Keep the scan tool dry, clean, free from oil/water or grease. Use a mild detergent on a clean cloth to clean the outside of the scan tool, when necessary.
- Do not drive the vehicle and operate the scan tool at the same time. Any distractions may cause an accident.
- To avoid damaging the scan tool or generating false data, make sure the vehicle battery is fully charged and the connection to the vehicle DLC is clean and secure.
- Do not place the scan tool on the distributor of a vehicle. Strong electro-magnetic interference can damage the scan tool.

Contents

1. Introduction	1
1.1 Brief Introduction	1
1.2 Tool Description	2
1.3 Accessory Description	3
1.4 Technical Parameters	4
2. Use the Tool	5
2.1 Power On	5
2.2 Screen Calibration	6
2.3 Power Off	7
2.4 Standby	7
2.5 Function Button Description of Diagnostic Interface	7
2.6 Enter Three Modes by Pressing Shortcut Key	8
2.7 Check Screenshots	8
3. Diagnostic Instruction	8
3.1 Set-up and Connection	8
3.1.1 Set-up	8
3.1.2 Connect C68 with vehicle	9
3.2 Diagnostic Procedure	10
3.2.1 Select available vehicle makes	10
3.2.2 Enter diagnostic system	10
3.2.3 Diagnostic function menu	12
3.2.4 Read Datastream	13
3.3 C68 Function Description	14

4. Updating the C68	15
4.1 Registration	15
4.1.1 Distributor registration	15
4.1.2 Product user registration	17
4.2 Upgrade	19
4.2.1 Upgrade preparation	19
4.2.2 Download software	19
4.2.3 Upgrade the tool	20
4.2.4 Upgrade update show	25
4.3 Member Center Information	26
4.3.1 Member information	26
4.3.2 Change password	26
4.3.3 Add serial number	26
4.3.4 Customer service	27
4.3.5 Software download	27
5. Registration and Upgrade FAQ	27
5.1 Registration FAQ	27
5.2 Upgrade FAQ	28
6. Maintenance, Warranty and Service	29
6.1 Maintenance	29
6.1.1 Cleaning and protect the touch screen	29
6.1.2 Clean and inspect the unit	29
6.1.3 Quick troubleshooting tips	29
6.2 Warranty	29
6.3 Service	30

1. Introduction

1.1 Brief Introduction

C68 is an ultimate professional auto diagnostic tool that can check all systems of all major European, American and Asian vehicles. With more than 50 vehicle makes and hundreds of vehicle electronic systems make it globally adaptive and practical in use, and multifunction performs outstanding diagnostic performance. It provides an ever fast and stable diagnostic speed with its new and unique platform. The new technologies of which its compatibility with different platforms and strengthened firmware and software that advances the diagnostic functions, speed up the diagnostic processes and extend the capability in firmware and software. It integrates the needs from DIY market to professional technicians' criteria. A more convenient and trouble-free diagnostic experience is provided at any time by your side as to its compact and durable housing. This unique solution keeps it up-to-date to meet the market needs and development trends. Easy operation on diagnosis symptoms and codes, the creative screenshots capturing in real time function offer an efficient repairing service for individuals or workshops. External SD card with large capacity stores the screenshots captured in real time.

Advantages

- Multilanguage supported which allows it to be used in different countries and areas.
- Mechanical but compact design with rubber and screen protector housing, high-resolution and sensitivity colorful touch screen combined with advanced diagnostic multifunction make it more convenient, efficient, practical and accurate for diagnosis.
- Unique platform provides high speed and stable of diagnosis

Durability

- The integrative structural design is anti-falls, anti-seismic and durable.
- The industrialization design ensures that the product works stably even under adverse environments such as high-temperature, low-temperature, etc.
- High-voltage class protection design which supports vehicles with 12V and 28V.

1.2 Tool Description

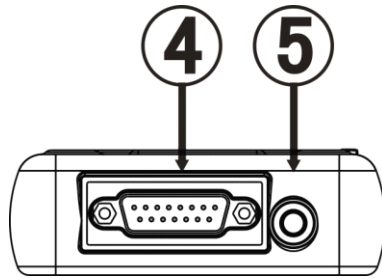


Figure1.1 C68 Top view

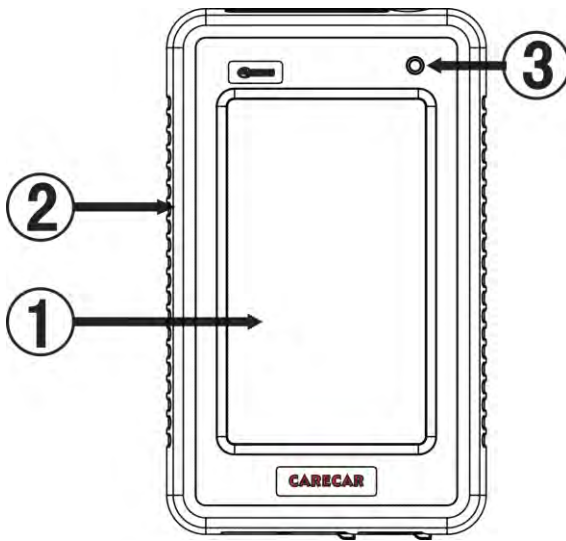


Figure1.2 C68 Front view

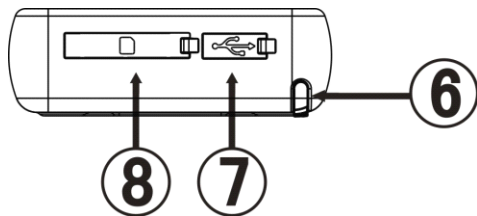
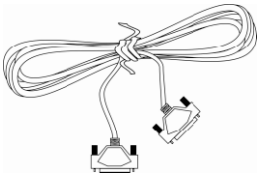

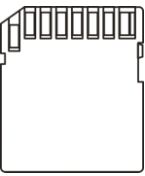

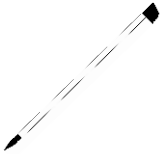
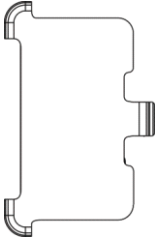


Figure1.3 C68 Bottom view

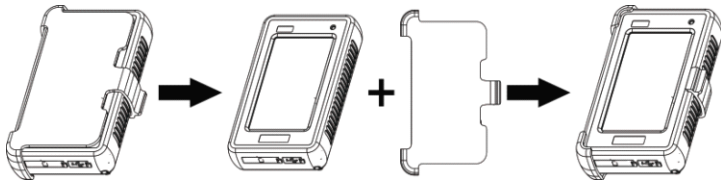
NO.	Name	Description
1	Touch Screen	Indicate operation buttons, testing information and help information
2	Protective Case	To protect C68 from vibration, dropping and dirt
3	Power Light	To indicate tool's operation status
4	Diagnostic Port	To connect main cable
5	Shortcut Key	Touch screen calibration
6	Stylus	Selecting items and enters information while operating the C68
7	Micro USB Port	To connect the computer for update
8	SD Card Slot	To insert the SD card

1.3 Accessory Description

NO.	Name	Description	Picture
1	C68 Main Cable	To connect C68 with OBDII connector	 A coiled white cable with a black OBDII connector at one end and a black connector at the other.
2	C68 Connector	OBDII diagnostic connector	 A black plastic OBDII diagnostic connector with a rectangular opening.
3	SD Card	To store C68 vehicle diagnostic softwares and screenshots	 A standard SD memory card with a gold-colored contact strip on the left side.

4	USB Cable	To connect 68 with PC	
5	Stylus	To click operation on C68	
6	Screen Protector	To protect C68 touch screen	

Remark: Instruction for using the screen protector



1.4 Technical Parameters

- Main Unit Size: 5.91"x 3.54"x 1.12"
- CPU: Industrial Class ARM32
- Memory: 64M

- SD card: Support mass external storage card
- Interface: USB 2.0
- Voltage: DC9V/DC28V
- Display Screen: 4.3 inch LCD touch screen (480*270) TFT

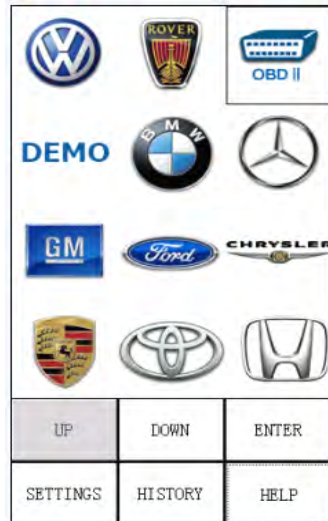
2. Use the Tool

2.1 Power On

It is powered automatically to connect with vehicle DLC by main cable, or connect with PC by USB cable, screen will display initializing interface as shown in picture 0.1 below. Use the stylus to click anywhere of the screen, system will enter into diagnostic interface as shown in picture 0.2 below:



Picture 0.1



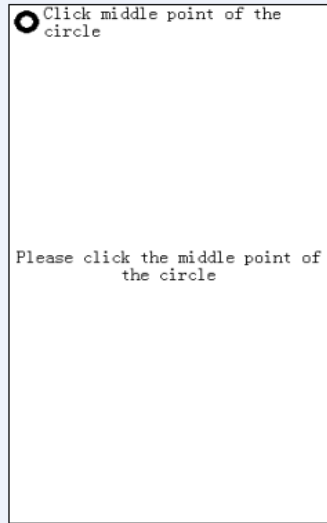
Picture 0.2

2.2 Screen Calibration

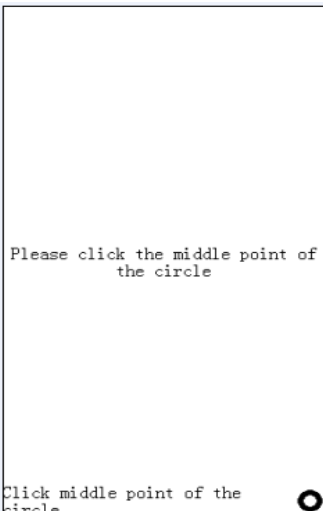
After enter into initializing interface, press [Shortcut Key] twice, system will change to screen calibration interface as shown in picture 0.3 below. According to tips on the screen, enter into the interfaces as picture 0.4, 0.5, 0.6 shown below to finish screen calibration, after finish it, according to tips shown as picture 0.6, click screen to exit screen calibration.



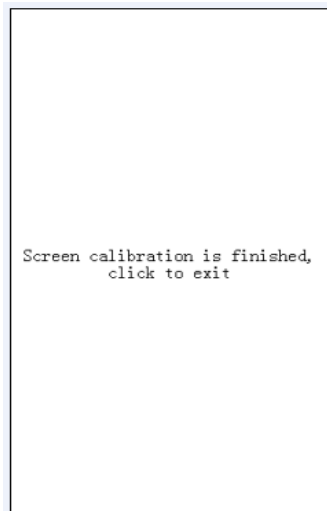
Picture 0.3



Picture 0.4



Picture 0.5



Picture 0.6

2.3 Switch off

Disconnect C68 with DLC or USB if you want to turn off after using it.

2.4 Standby

Under C68 is in ‘On’ status, press [Shortcut Key] to turn off screen display, then C68 will be in standby mode. Press [Shortcut Key] again if you want to stop standby mode and turn on the screen display.


2.5 Function Button Description of Diagnostic Interface

UP: Display last page of menu, if there is only one page or the current page is the last page, the button will be inactive and turn to grey.

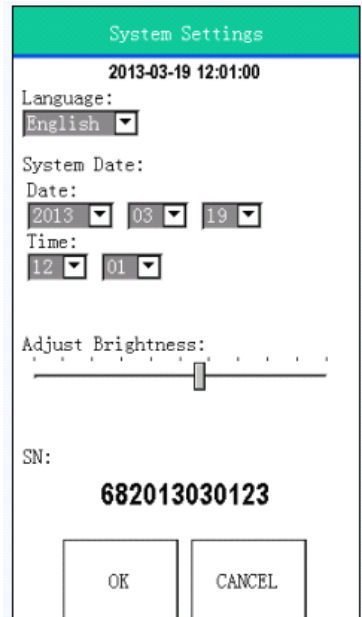
DOWN: Display next page of menu, if there is only one page or the current page is the last page, the button will be inactive and turn to grey.

HISTORY: Record last diagnostic procedure.

SETTING: Set language, time and contrast. Click [Setting] button, enter system setting interface as shown in picture 0.7

- 1) Language setting: click  to select desired language, language can be set after re-start the tool.
- 2) Time setting: set system time according to current time when in use.
- 3) Contrast setting: pull the scroll bar to adjust display's brightness.
- 4) Tool serial number: serial number is produced from production date, which will be used for after service (registration for download or change configurations)

Click [OK] to exit after setting the language, time and contrast.



Picture 0.7

2.6 Enter Three Modes by Pressing Shortcut Key

- 1) **Calibration mode:** Power up C68 to enter starting interface, double press shortcut key, then it will turn to calibration interface, details about screen calibration, please refer to [2.2 Screen Calibration].
- 2) **Update starting mode:** After copy the display program or vehicle software to [UPDATA] folder, power up the tool, if it appears problem during updating, press the shortcut key and connect tool with PC by USB cable at the same time, this is to avoid power up problem and be able to restart the tool, details please refer to [5.2 Upgrade FAQ]
- 3) **SD card mode:** Power up C68 by USB cable, DO NOT press shortcut key and wait few seconds, it will enter into SD card mode, then you can check system files and screenshots, detailed operation please refer to below instruction [2.7 Check Screenshots]

2.7 Check Screenshots

A. Check screenshots by SD card

- 1) Connect SD card with PC by using a SD card converter or plug the SD card to SD card slot if your PC has a SD card slot.
- 2) Find the folder [bmp] in removable disk, click to enter and check the screenshots.

B. Check screenshots by USB cable

- 1) Connect the tool with PC by USB cable.
- 2) Find the folder [bmp] in removable disk, click to enter and check the screenshots.

3. Diagnostic Instruction

3.1 Set-up and Connection

3.1.1 Set-up

General test conditions

- 1) Turn on vehicle power switch
- 2) Battery voltage of the vehicle should be within 11V-14V, C68' working voltage range is 9V-36V
- 3) Throttle should be Off

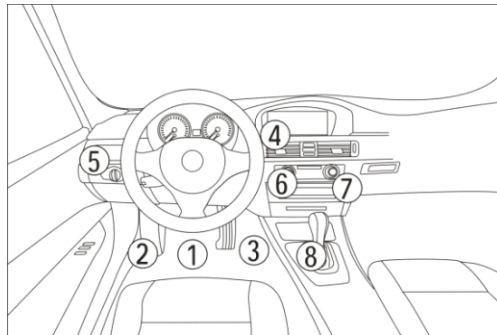
- 4) Ignition timing and idle speed should be within specification range, water and transmission oil temperature is in normal working range (water temperature is 90 – 105°C and transmission oil temperature is 50– 80°C).

Connector selection

There are various connectors provided with the main unit. Every connector has an application, please check the connector application carefully and select the correct connector for the vehicle being diagnosed.

Find Location of the Data Link Connector

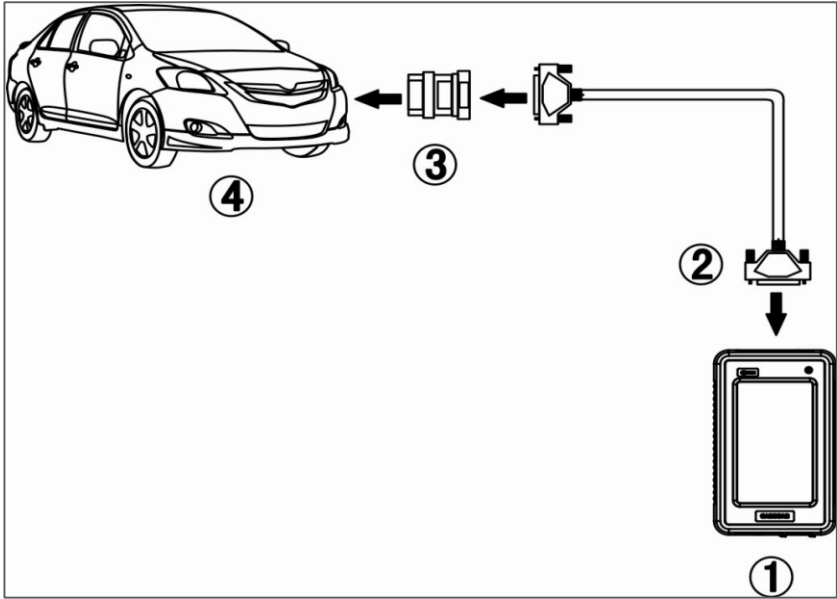
The location of the data link connector is usually in the left side under the dash, behind covers on center of dash or center console, but there are 8 common locations as shown below.



3.1.2 Connect C68 with Vehicle

Please refer to below figures to learn how to connect to get power.

- 1) Check DLC location and shape
- 2) Select correspondent connector according to vehicle brand and model
- 3) Connect the correspondent connector with one terminal of main cable and plug this terminal in DLC
- 4) Connect main unit with another terminal of main cable



3.2 Diagnostic Procedure

3.2.1. Select available vehicle makes

C68 can diagnose various makes of vehicles. Carecar keeps updating to enhance the software. Please visit the Carecar website <http://www.carecartech.com> to download the latest released software.

The vehicle brands are showing as icons. Click on the corresponding vehicle icon to load the diagnostics software and start diagnosis. It's very useful and fast to enter into the vehicle diagnostic system if you are familiar with the vehicle icons.

There are different software packages for different user needs according to regions and vehicle makes. For the software in your unit, please refer to the packing list or contact the local distributor.


3.2.2. Enter diagnostic system

After connect the C68 with vehicle by the main cable, C68 will turn on automatically and enter to initialize interface as shown in picture 0.1 (Page 5) , click anywhere of the screen at initialize interface to enter diagnostic

interface.

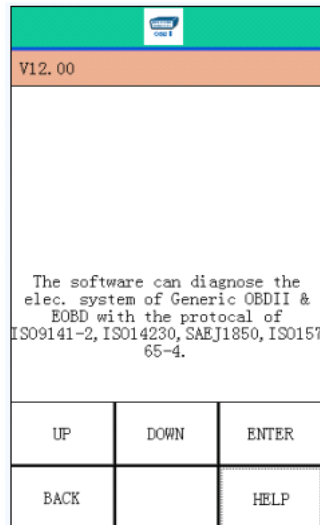
After enter diagnostic interface, find correspondent vehicle icon by click [UP] [DOWN] buttons. There are three ways to enter vehicle diagnosis:

- 1) Click correspondent vehicle icon, and click [ENTER] to start diagnosis.
- 2) Quick double click correspondent vehicle icon, system will start diagnosis
- 3) Click [History] at diagnostic interface, system will enter into last diagnostic record (only apply to the same vehicle that diagnosed last time)

Here take OBDII as an example to show how to diagnose the car. Click OBDII  as shown in picture 0.2. Then click [ENTER] to enter the software version selection interface of vehicle diagnosis as shown in picture 0.8. Select desired version(There is only one version V12.00 as shown in picture 0.8 below, normally it's requested to choose the latest version, each last version is compatible with older versions). Click [ENTER] to start OBDII diagnosis.

Remark:

In picture 0.8: [HELP] button helps user to know the tool functions, update information and operations, details please refer to [HELP] function of C68. [UP] [DOWN] [ENTER] [BACK] button functions, please refer to page 7.



Picture 0.8

After enter OBDII diagnostic system, click [Generic OBDII & EOBD] as shown in picture 0.9, then system will enter into [Select diagnostic function] interface as shown in picture 1.0 next page:

In picture 0.9:

[RESET] BUTTON: It helps to re-enter diagnostic system (to set the diagnostic system that is under processing re-enter the diagnostic system).

[CAPTURE] BUTTON: To capture the screen interface in real time, captured screenshots will be saved in SD card.

Generic OBDII & EOBD			
Generic OBDII & EOBD			
OBDII ISO 15765 CANBUS MODE			
OBDII ISO 14230 KWP FAST MODE			
OBDII ISO 14230 KWP ADDRESS MODE			
OBDII ISO 9141 ISO ADDRESS MODE			
OBDII SAE J1850 PWM MODE			
OBDII SAE J1850 VPW MODE			
UP		DOWN	
ENTER			
BACK	RESET	HELP	CAPTURE

Picture 0.9

3.2.3. Diagnostic function menu

- 1) In diagnostic function menu, select and click [Read trouble code] to execute this function, result will be shown in few seconds.
If it shows no trouble code, that means there is no trouble of the car system.
- 2) Click [Clear trouble code] to clear the trouble codes that has read. A message will tell you “Trouble code is successfully cleared” after you successfully

Select diag. function			
Read trouble code			
Clear trouble code			
Current powertrain diagnostic data			
Powertrain freeze frame data			
Request vehicle information			
Control of on-board system, test or component			
On-Board monitoring test results for specific monitored systems			
O2 Sensor monitoring test			
UP		DOWN	
ENTER			
BACK	RESET	HELP	CAPTURE

Picture 1.0

cleared the code. If a message indicate “No trouble code” that means the trouble code is cleared in all systems, or the system you diagnose has no trouble code.

- 3) Click [Current powertrain diagnostic data], system will show current DataStream of powertrain as shown in picture 1.1. Click needed DataStream’s and click [ENTER] to enter [DataStream] menu.

Remark: Different vehicle system has different data selections in [Select Diag. Functions], details refer to C68 operation.

DataStream Select			
Fuel system 1 status			
Fuel system 2 status			
Engine Coolant Temperature			
Long Term Fuel Trim - Bank 1			
Long Term Fuel Trim - Bank 2			
Absolute Throttle Position			
Commanded Secondary Air Status			
Oxygen Sensor Output Voltage B1S1			
Short Term Fuel Trim B1S1			
Oxygen Sensor Output Voltage B1S3			
UP		DOWN	
ENTER			
BACK	RESET	HELP	CAPTURE

Picture 1.1

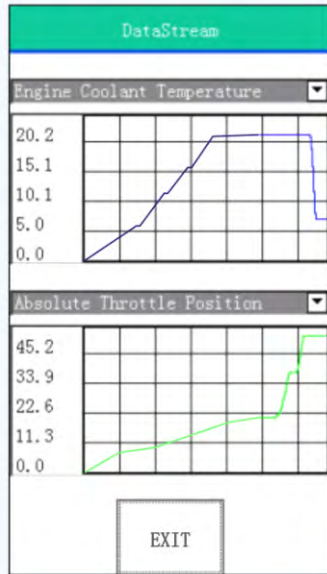
DataStream		
DataStream Name	Value	Unit
Engine Coolant Temperature	21	degC
Absolute Throttle Position	20.39	%
UP		DOWN
GRAPH		
BACK	RESET	HELP
CAPTURE		

Picture1.2

3.2.4. Read Datastream

Live data can be read under [DataStream] menu as shown in picture 1.3, [Capture] function can capture screenshots with live data in real time, or click [Back] to exit, or click [Reset] to re-enter the diagnostic system again if needed.

Click [GRAPH] button as shown in picture 1.2, system will display graphic view of DataStream as shown in picture 1.3. Click [EXIT] button to get back.



Picture 1.3

3.3 C68 Function Description

1. Communication test of CAN-BUS and K communication cable
Support following protocols:
 - 1) PWM
 - 2) VPW
 - 3) KWP2000
 - 4) ISO9141
 - 5) CAN-BUS
2. Basic Function:
 - 1) Read ECU information
 - 2) Read trouble code
 - 3) Clear trouble code
 - 4) Read DataStream
 - 5) Component test

- 6) Basic setting
 - 7) Programming
 - 8) Reset service lights
3. Special Function:
- 1) Read password (VW)
 - 2) Reset airbag (VW, Geely etc)
 - 3) Reset throttle (BMW, Toyota, Honda etc)
 - 4) Immobilizer (BENZ, Greatwall, Brilliance, Roewe, MG etc)

4. Upgrade the C68

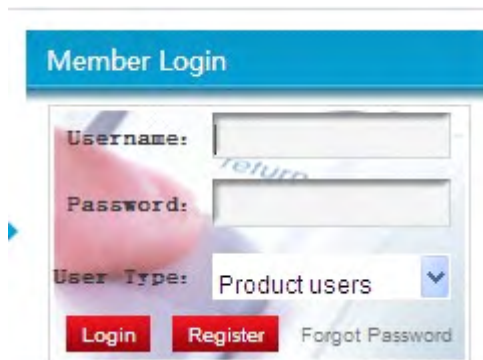
4.1 Registration

4.1.1 Distributor registration

Note: Distributor registration is applied to distributor only.

Distributor shall get a dealer code and a password from us before register on our website at the first time to purchase our tool.

Step 1: Browse our website www.carecartech.com and you will see register section as shown in below picture:



The image shows a screenshot of a web form titled "Member Login". The form has a blue header with the text "Member Login". Below the header, there are three input fields: "Username:" with a text box, "Password:" with a text box, and "User Type:" with a dropdown menu showing "Product users". At the bottom of the form, there are three buttons: "Login" (red), "Register" (red), and "Forgot Password" (grey).

Click [Register] to continue registration as display below:

User Home -- User -- [Registration](#)

Username :
carecartest ✓

Password :
●●●●●●●● ✓

Confirm Password :
●●●●●●●● ✓

User Type :
Distributor ✓

Dealer code :
A000017 ✓

password :
●●●●●● ✓

Contact :
test ✓

Tel :
586256866 ✓

Fax :
288665456 ✓

Zip code :
518057 ✓

E-mail :
sales@carecartech.com ✓

Create your own user name and password when you register which will be used for entering distributor center.

Please note to select [Distributor] for distributor registration, click [Confirm] after you fill the information, then it will pop a message as shown below:



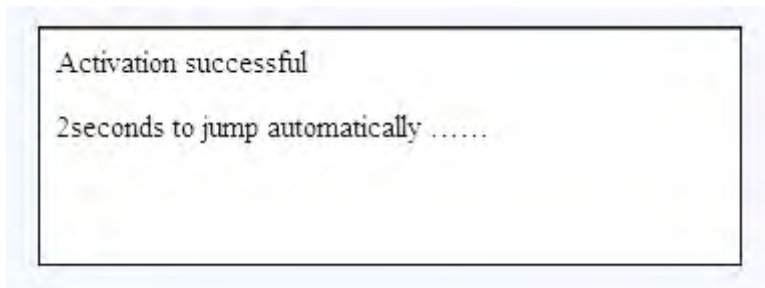
Please check email and you will get a link to verify your registration information as below:

Dear Member: testc68 Hello!

Thank you for registered members of this site. Please click on the following link to complete the registration

[Click here to complete the verification](#)

Click the link as instructed in the email, you will enter into distributor center as shown below:



Distributor registration is done. Login with [Username] and [Password] you created when you register as distributor to enter [Distributor Center]. In this center, you can manage the tool that has registered under your dealer code.

4.1.2 Product user registration

Note: Product user registration is applied to distributor or end user who has a tool in hand that need to update it.

Product user shall get a dealer code from distributor before register on our website. Product serial number and password will be provided by us.

Step 1: Browse our website www.carecartech.com and you will see register section and click [Register] to continue registration as display below:

User Home -- User -- [Registration](#)

Username :
test123 ✓

Password :
•••••• ✓

Confirm Password :
•••••• ✓

User Type :
Product users ▼

Serial Number :
68013000600 ✓

Product Password :
01739184 ✓

Dealer code :
A000017 ✓

Tel :
25663589 ✓

Phone Number :
15852353 ✓

Zip code :
518057 ✓

E-mail :
sales@carecartech.com ✓

Create your own user name and password when you register which will be used for entering product users' page to download softwares.

Please note to select [Product user] for end user registration, click [Confirm] after you fill the information, then it will pop a message to inform registration is successful.

Login with [Username] and [Password] you created when you register as product user to enter [Member Center] and download software.

4.2 Upgrade

4.2.1 Upgrade Preparation

Please prepare:

1. C68 main unit
2. USB cable
3. C68 User Manual
4. SD converter (self provided)
5. PC (keep PC connected with internet, close or stop other programs)

Here take tool serial numbered “68013000008” and PC with Windows XP for example:

4.2.2 Download software

Step 1. Login

Browse Carecar website: <http://www.carecartech.com> at home page, find “Login” function frame at down-right, input the user name and password you used to register as [**Product user**], please choose default [Product user], click [Login] as shown following:



Step 2. Select and download desired vehicle software

After login, it will enter into member’s page and shown as follow:

Member Home -- Member -- [Software Download](#)

SN: Language:

ICONS	Software Name	New version	Date	Version	Expires	Operate
<input type="checkbox"/>	Update Tool	V01.01	2013-08-03	V01.01	normal	View Download
<input type="checkbox"/>	UpdateShow	V01.17	2013-08-27	V01.17	normal	View Download
<input type="checkbox"/>	Austford	V18.01	2013-08-30	V18.01	normal	View Download
<input type="checkbox"/>	Audi	V18.03	2013-08-30	V18.03	normal	View Download
<input type="checkbox"/>	Benz	V18.02	2013-08-30	V18.02	normal	View Download
<input type="checkbox"/>	BMW	V18.03	2013-07-02	V18.03	normal	View Download
<input type="checkbox"/>	Chevrolet	V18.02	2013-08-30	V18.02	normal	View Download
<input type="checkbox"/>	Citroen	V18.02	2013-08-30	V18.02	normal	View Download
<input type="checkbox"/>	Daeveo	V18.02	2013-08-30	V18.02	normal	View Download
<input type="checkbox"/>	Daihatsu	V18.02	2013-08-30	V18.02	normal	View Download
<input type="checkbox"/>	Euroford	V18.02	2013-08-30	V18.02	normal	View Download
<input type="checkbox"/>	Fiat	V18.01	2013-08-30	V18.01	normal	View Download
<input type="checkbox"/>	GM	V18.02	2013-08-30	V18.02	normal	View Download
<input type="checkbox"/>	Honda	V18.02	2013-08-30	V18.02	normal	View Download

Before vehicle icons, there is a function frame for you to select multiple vehicle softwares and click [Download] to download selected softwares at one time.

Or you can click [Show All] to view and select all the softwares without change page to download at one time.

4.2.3 Upgrade the tool

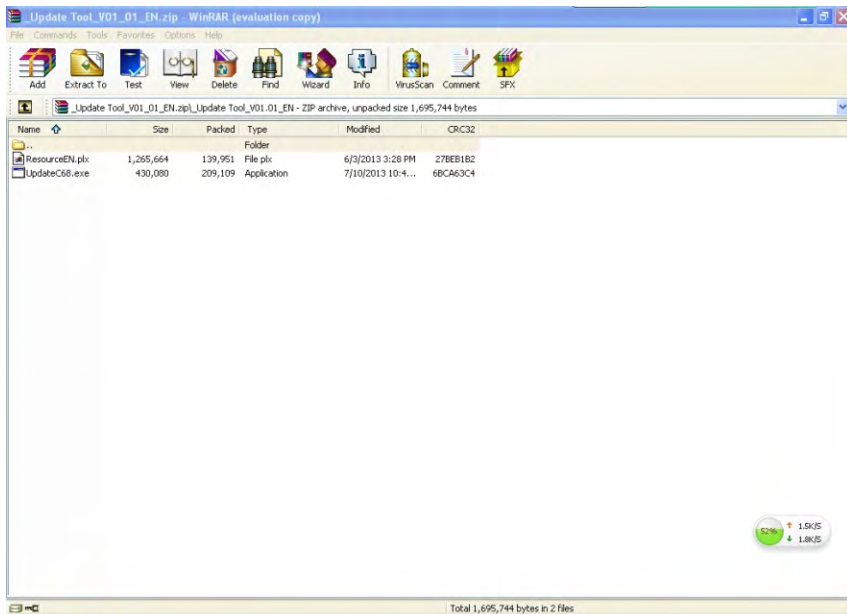
Note: Must download the [Update tool] from our website.

Step 1. Find the compressed file [680130000008] which you downloaded the softwares from Carecar website, uncompress it.

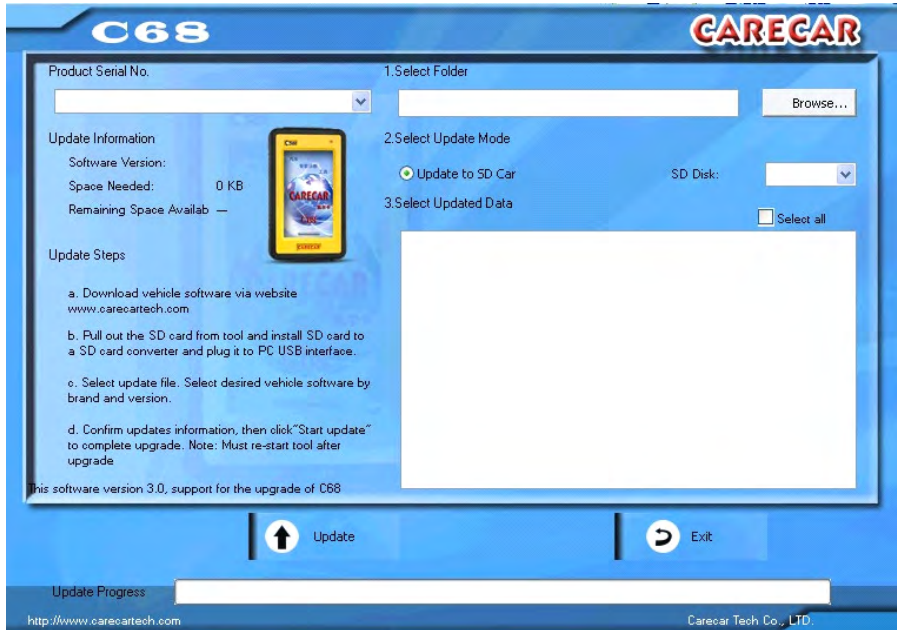
Step 2. Find [Update tool] file, open the file as shown below:



After you open it, it has two files, open the [driver] file as shown below:



After open the driver, update tool will be popped up as shown below:



Step 3. Preparation for two upgrade ways:

A. Upgrade to SD card

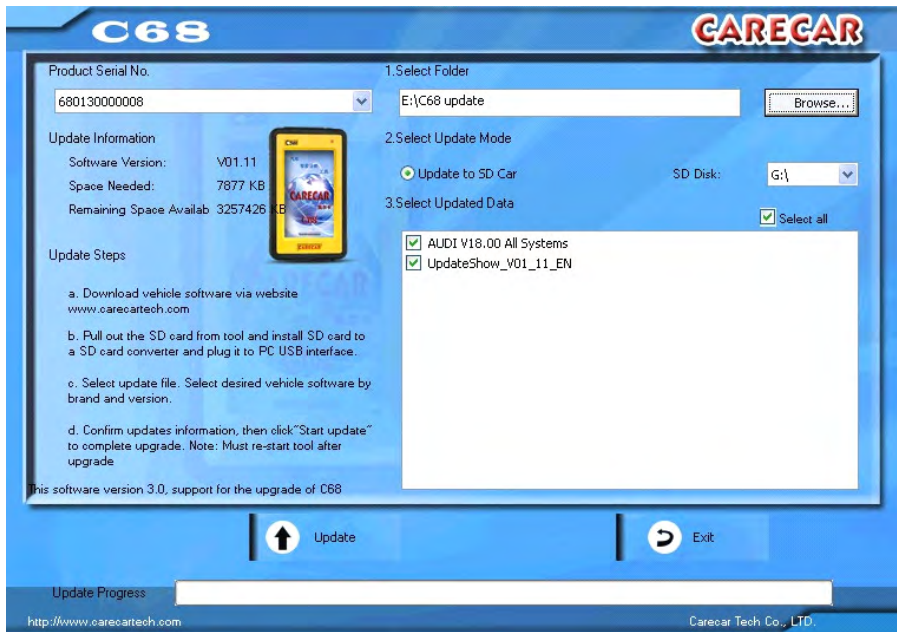
- 1) Get the C68 main unit, pull away rubber cover of SD card slot down at the end side of C68, you will see a SD card inside.
- 2) Pull out SD card by pressing it slightly, plug it into a SD converter (please note to plug in right side).
- 3) Plug the converter into PC USB interface
- 4) It pops out [Install new hardware] message down at right corner of PC, wait until it pops [Install new hardware is successful] (Note: some computer just read the card without notice message like this)

Further steps, please follow instruction from [**Step 4.**] in page 23.

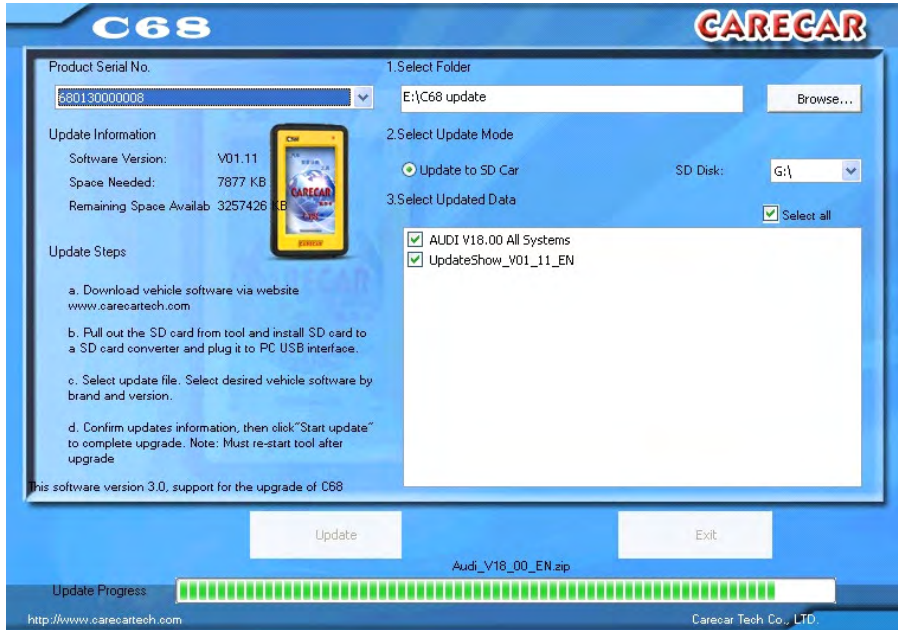
B. Upgrade to tool by USB cable:

- 1) Prepare C68 main unit and USB cable, connect the tool with PC by the USB cable.
- 2) It pops out [Install new hardware] message down at right corner of PC, wait until it pops [Install new hardware is successful] (Note: some computer just read the card without notice message like this)
- 3) Double click [My computer], [Removable Disk] will be indicated to tell you that you have connect the tool with computer successfully. Further steps, please see following instructions from [Step 4].

Step 4. Click button [Browse] and find the folder that you uncompressed in your PC, update tool will be shown as below:



Step 5. Click [Update] to start upgrade, then it will be processing as shown below:



Upgrade finish when it pops a message as shown below:



If upgrade to SD card, after finish above upgrade procedures, please operate as follow:

- 1) After upgrade the vehicle software to SD card, disconnect it with PC and pull out it from SD card converter or SD card slot. Install it back to the scan tool and pull back the rubber cover.

2) Power up the tool by USB cable to connect it with PC, press shortcut key in 5 seconds, the screen will enter to start display automatically. Upgrade finish!

Note: if you have upgraded “update show” together with vehicle software, use a USB cable to connect the tool with PC, when the C68 is powered up, press the shortcut key in 5 seconds, the tool screen will pop a message to tell you that the tool will proceed upgrade, press [OK] to start the upgrade, the light will turn to red and in quick blink till turn to yellow and enter to start display. Upgrade finish!

Caution: During this step, do not cut off the power!

If upgrade to tool by using USB cable, please operate as follow:

1) Disconnect tool with PC and connect again by a USB cable.

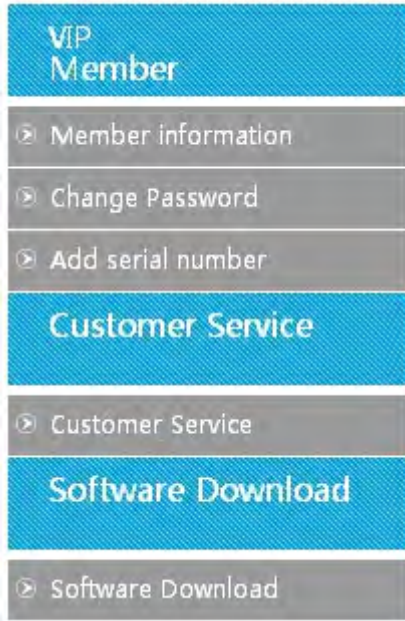
The following operations will be the same as previous instructions [**If upgrade to SD card...**] from [**point 2**].

4.2.4 Upgrade “Update Show”

If you want to upgrade [Update show], you must download and upgrade at least a vehicle software together with [Update show], so that it will be upgradable, otherwise it won't be detected by the update tool if you upgrade the [Update show] individually.

4.3 Member Center Guidance

Enter to [Member Center], there is a row of function menu as shown below:



4.3.1 Member information

- 1) If you want to check and modify the registration information, please click [Member information]
- 2) You can modify any information indicated there except User Name, please click [Confirm] after modification, the information will be saved successfully.

4.3.2 Change password

- 1) If you need change password, please click [Change password], fill in [Original password] and [New password] accordingly, click [Confirm] to save.
- 2) Please use new password when you login next time.

4.3.3 Add serial number

- 1) If you own several Carecar tools, you don't need to register twice, please click [Add serial number] and fill in the tool's serial number,

product password and dealer code accordingly, click [Confirm] to add successfully with a message notice.

- 2) After you add multi-serial numbers under one user, please note to select correspondent serial number of the tool to download software , or you will not be able to update the tool

4.3.4 Customer service

If you want to know more about Carecar products or have any feedback, please click [Customer service] to enter [Customer feedback] interface, please fill in the information accordingly and click [Confirm] to send the mail, we will reply to your email as soon as possible.

4.3.5 Software download

- 1) If you want to update and check software information, please click [Software download], you will see software version, date and updating information etc. About download and upgrade please refer to **[4.2 Upgrade]**
- 2) User with multi-serial numbers to be notified, select correspondent serial number where indicate serial number at up-left of where all the software displayed, then download the software.

5 Registration and Upgrade FAQ

5.1 Registration FAQ

- 1) **Q:** How to do when End user or Distributor forget login password?
A: Browse <http://www.carecartech.com>, find [Member Login] section, click [Forgot Password], fill in user name and email address that you used for registration, select user type and click [Confirm], it will pop a message to tell you that a mail has been sent to your email address. Please check your email box if you receive a mail titled [Forgot Password], you will get a initial password [123456]. If you want to change the initial password, please go to member center to change it.
Note: if you can't receive the email, check your junk mail box.
- 2) **Q:** How to do when I don't receive the mail after I tried finding back password through Carecar website?
A:
 - a. please refresh your mail box
 - b. please check if it's in your junk mail box
 - c. If you don't receive it, please try again
- 3) **Q:** How to exit member center?

A: Find and click [Exit] at the first line of member center, or get back to home page, find [Member Login] section, click [Exit].

5.2 Upgrade FAQ

- 1) **Q:** How to do if update tool cannot read serial number and select software when I use a USB cable to upgrade under [Removable disk] readable condition?
A: Turn on C68, click [Setting], down there is tool serial number, check if the serial number is the same as the one of the downloaded software.
- 2) **Q:** How to do when popping [Cannot read serial number] while I am clicking [Browse] to select software folders in update tool during upgrade by a USB cable?
A: Please double click [My computer], if computer can't read [Removable Disk], it means that you computer can't read the device, please save needed files and pull out the USB cable, restart the computer and connect again by USB cable.
- 3) **Q:** How to do if I pull out USB cable during upgrade?
A: Reconnect the tool with computer by USB cable, click [Update] in C68 update tool to re-upgrade.
- 4) **Q:** After finishing software update, it needs to be restarted to update to the tool, how to do if connection being cut off while C68 is updating?
A: If this happens, the tool cannot start up, you will need to contact manufacture or distributor, a [c68loade] file will be provided by manufacturer, after receive the file, the operation will be as follow:
 - 1) Connect tool with PC by a USB cable and press the shortcut key at the same time, C68 will be powered up and the light at up-right corner will be red and in quick blink, when you see this, please stop pressing shortcut key
 - 2) Open [My computer], you will see a removable disk named [CARE ENABLE], double click to enter the disk, you will see a file named [c68loade].
 - 3) Copy the [c68loade] that provided by manufacture to overwrite the previous one.
 - 4) After overwrite the file, close the removable disk and disconnect tool with PC.
 - 5) Connect tool with PC again (Note: do not press shortcut key this time), wait for few seconds, tool will be powered up and enter to start display automatically.

6 Maintenance, Warranty and Service

6.1 Maintenance

6.1.1 Cleaning and protect the touch screen

The touch screen can be cleaned with a soft cloth and alcohol.

NOTE: Do not use any abrasive cleansers or automotive chemicals on the touch screen.

6.1.2 Clean and inspect the unit

When using the C68 unit, checking the housing, wiring, connectors for dirt and damage before and after use.

6.1.3 Quick troubleshooting tips

1. Ensure that the scan tool is well connected to a power source and the LEDs are illuminated.
2. Ensure the scan tool has been registered.
3. Ensure the software and diagnostic application software are updated.
4. Check all the cables, connections and indicators to see if the signal is being received.
5. Do not use the scan tool beside the microwave ovens, cordless phones and some medical or scientific instruments to prevent signal interference.

6.2 Warranty

This warranty is expressly limited to persons who purchase products for purposes of resale or use in the ordinary course of the buyer's business. It's subject to the following terms and conditions:

- 1) product is warranted against defects in materials and workmanship for two years (24 months) from date of delivery to the user.
- 2) The sole responsibility of under the Warranty is limited to either the repair or, at the option of replacement of the tool at no charge with Proof

of Purchase. The sales receipt may be used for this purpose.

- 3) This warranty does not apply to damages caused by improper use, accident, flood, lightning, or if the product was altered or repaired by anyone other than the Manufacturer's Service Center.
- 4) **It** shall not be liable for any incidental or consequential damages arising from the use, misuse, or mounting of the tool. Some states do not allow limitations on how long an implied warranty lasts, so the above limitations may not apply to you.
- 5) No agent, employee, or representative has any authority to bind to any affirmation, representation, or warranty concerning automotive meters, except as stated herein.
- 6) It reserves the right to make changes at any time without notice.