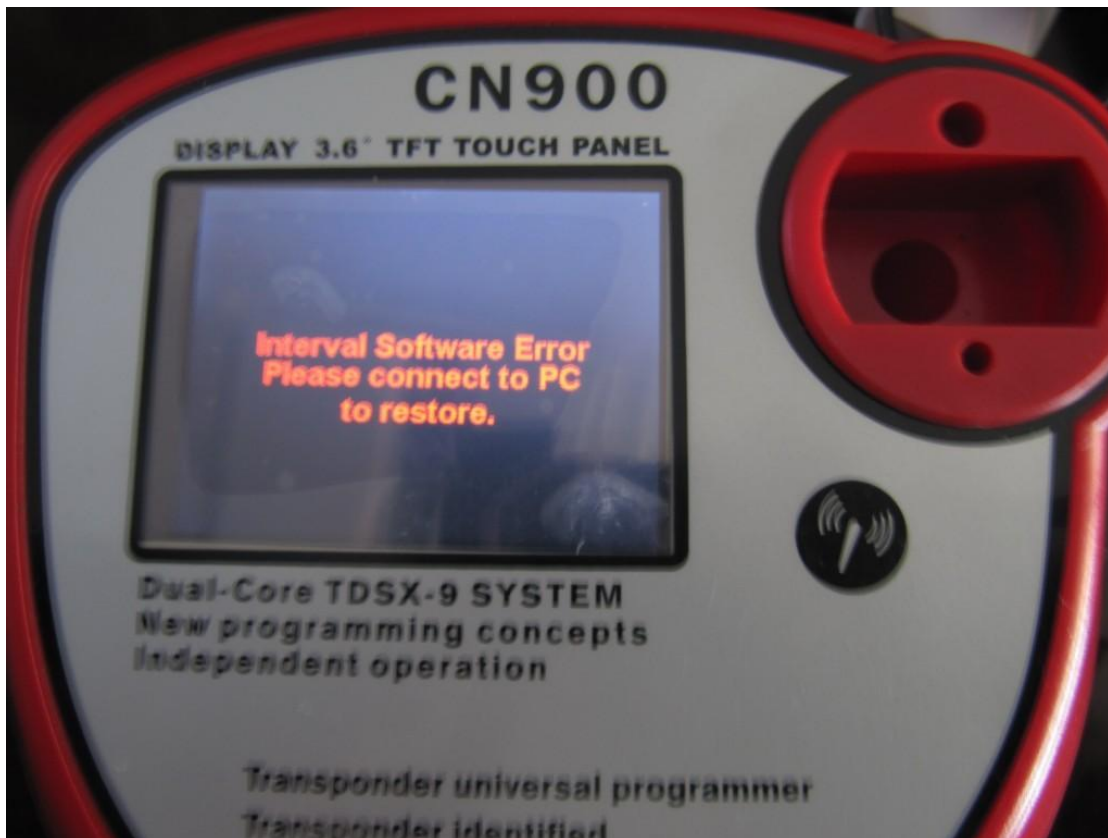
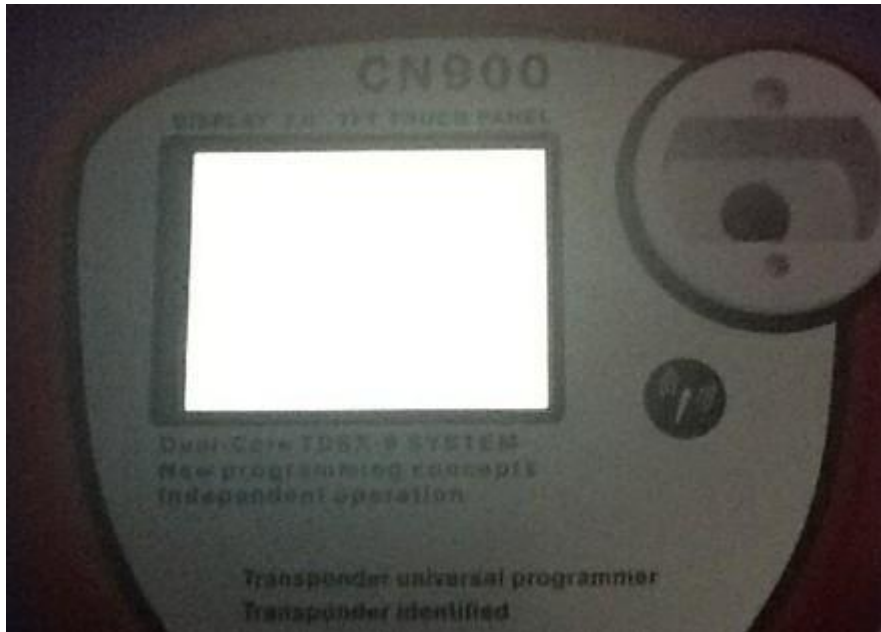


The way to fix CN900 screen became black and white

If CN900 screen became black and white, please check follow ways how to fix it:



Step 1: First connect CN900 with computer and power by USB wire

Step 2: First go to CN900 official website: www.cn900.net and download : CN900_LOADER V3.10

CN900_LOADER V3.10



2011-12-05

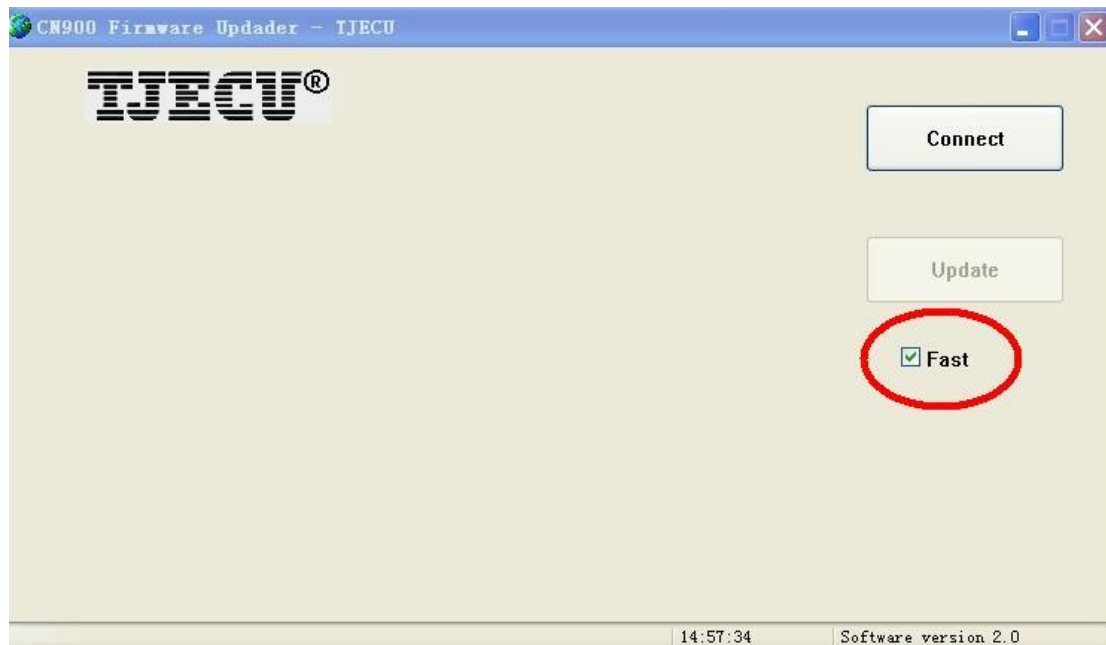
[Download](#)

Then decompressing file and save it

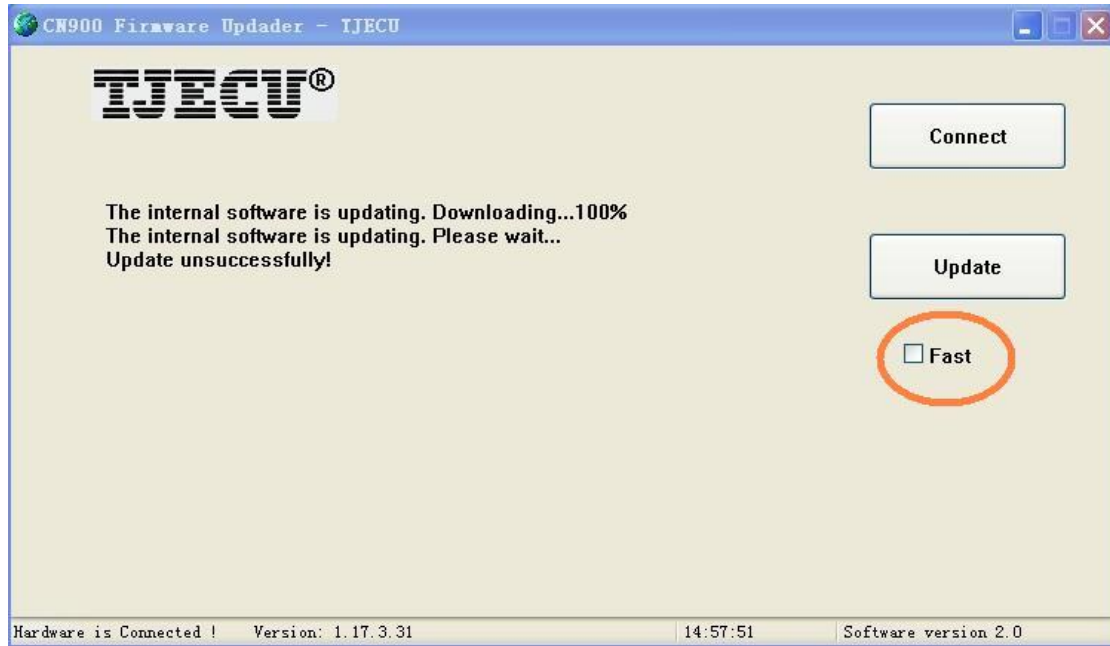


Step 3: Click  . Then will appear follow picture:

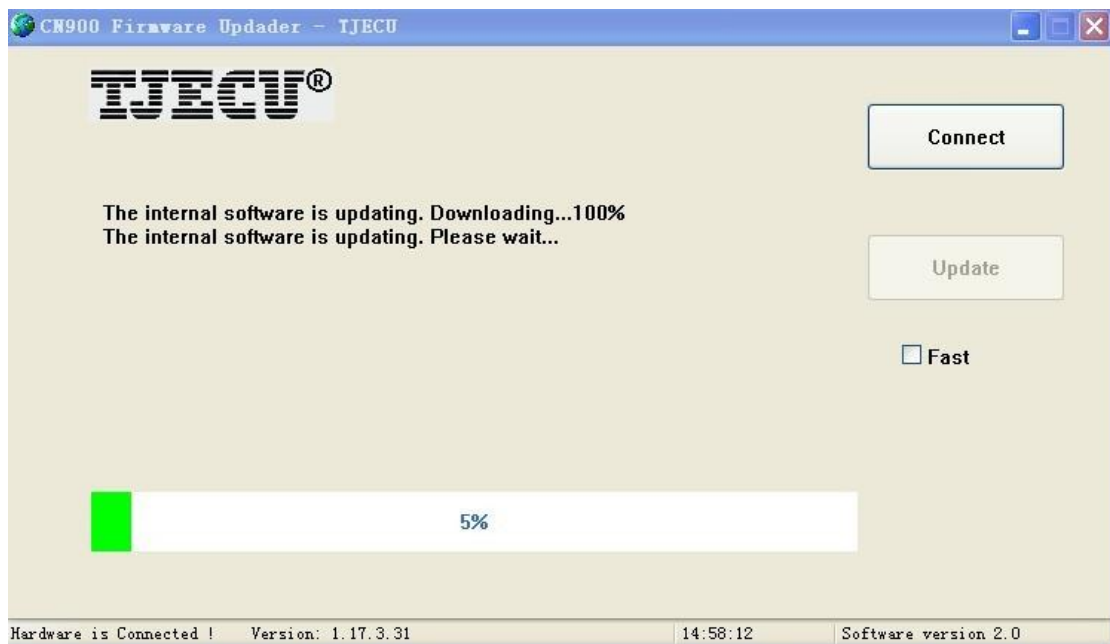
You will see in front of **Fast** there marked hook



Step4: Remove the Hook in front of Fast.



Step 5: After remove the Hook in front of Fast then press Update button. After then CN900 and update with computer together.



Step 6: After CN900 finished update with computer then will recover as follow:



Remark 1: If update one time the CN900 still not recover then try as above ways again and again till it recover.

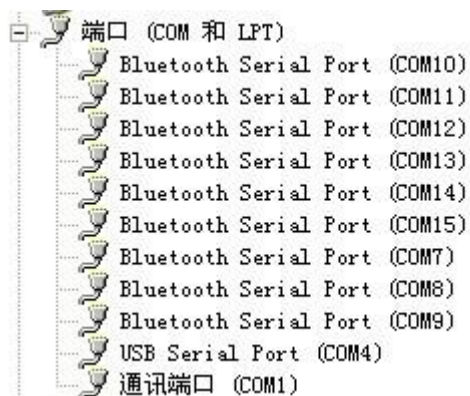
Remark 2: If during update CN900 and appear a window which need you choose COM port. Then you need to choose a correct COM port. If you do not know which is correct COM port then operate as follow steps:

First: right click my computer and choose property

Second: Choose Hardware.

Third: choose device manager

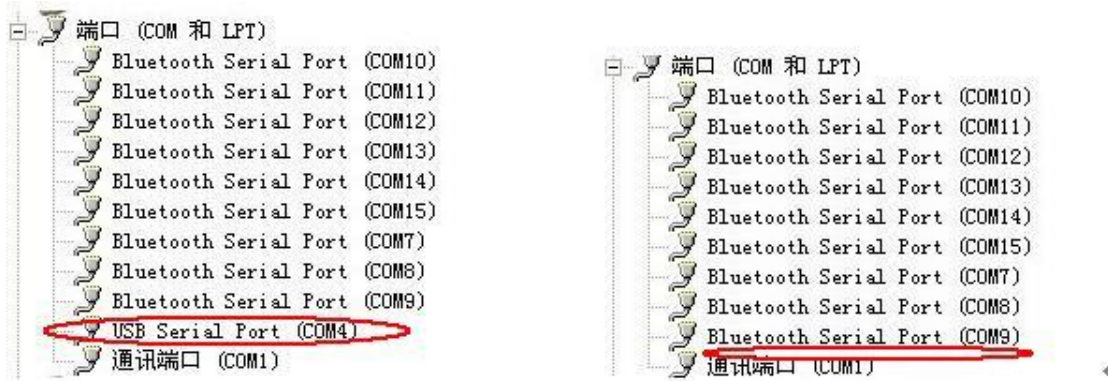
Fourth: find port (COM and LPT) and click + then will see follow ports



And then take CN900 USB wire out from computer then check the port (COM 和 LPT) again:



Checking the difference between connect with CN900 USB wire with computer and take out CN900 USB wire from Computer:



Then you will see when connect with CN900 USB wire with computer then will see USB Serial Port (COM4) .

After take out CN900 USB wire from computer then USB Serial Port (COM4) disappear.

So you need to choose USB Serial Port (COM4) .

Notice: When choose COM port not must be USB Serial Port (COM4) . Different computer have different case. It depend on that when you connect CN900 USB wire with computer and take out USB wire from computer which port (COM) appear and disappear therefore that port (COM) you need to choose