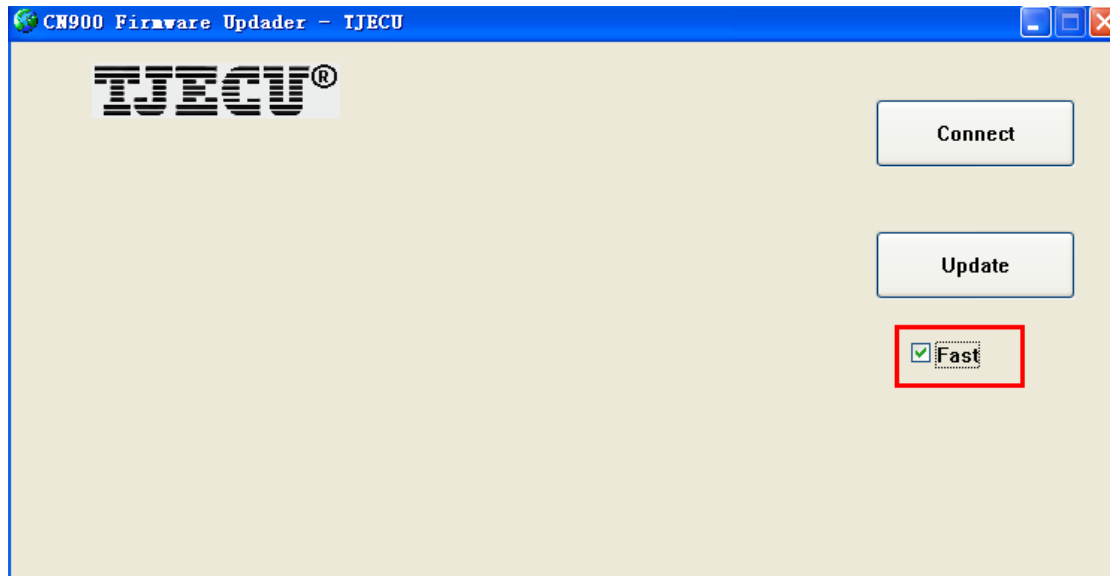


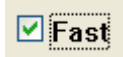
CN900 hardware Update detail

一. The main module updates

Open the Upgrade program of CN 900 PC



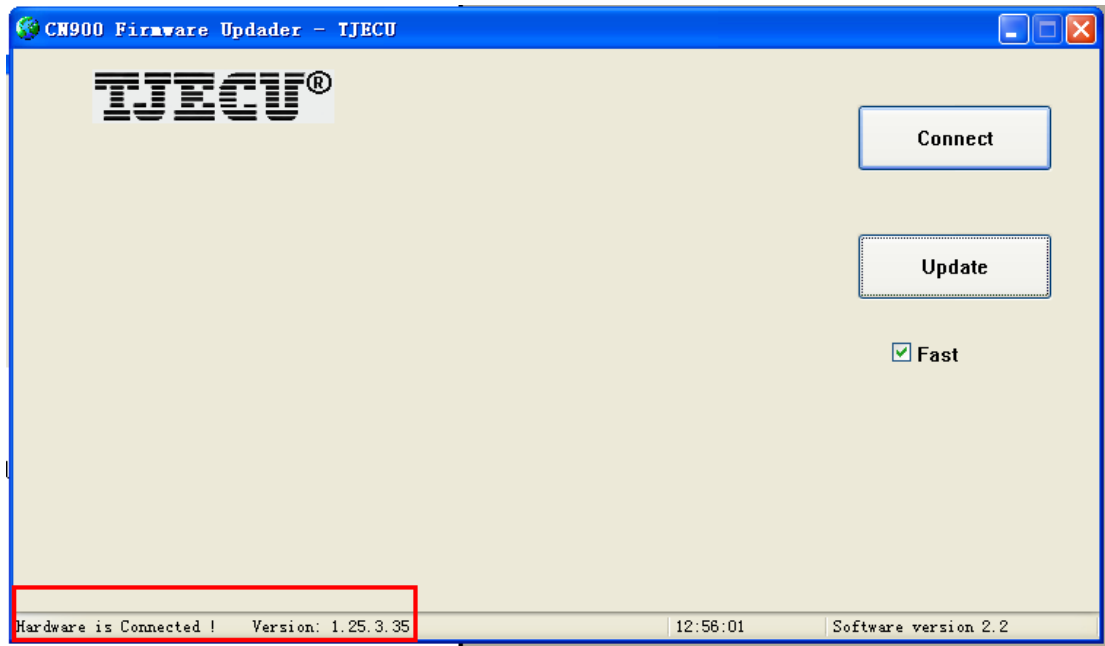
Please Notice : must make Tick




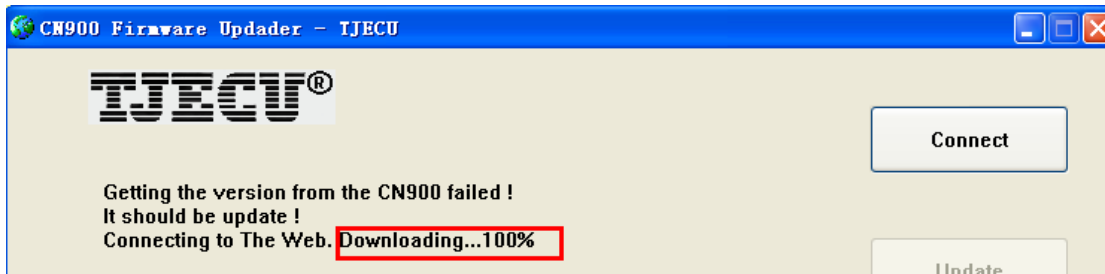
1. Connect PC USB and turn on the power of CN900., Click



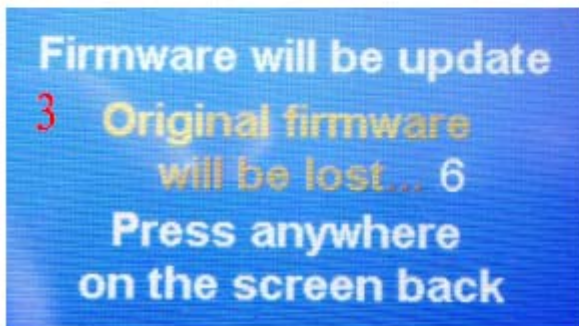
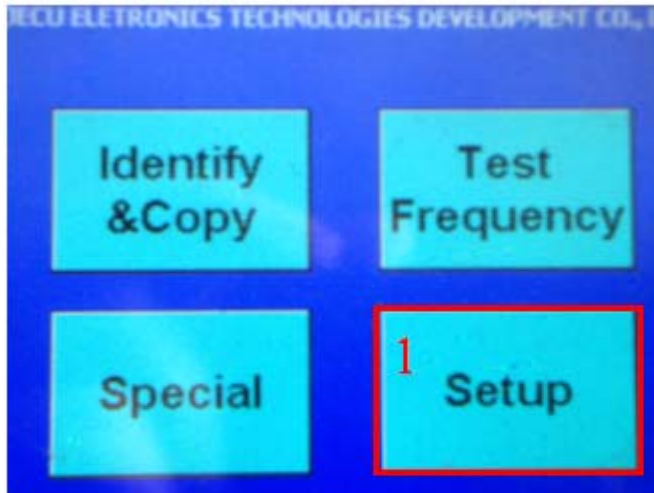
.After then the CN900 will connecting with the update software. If connect successfully then the Lower right corner will show you the CN 900 version.



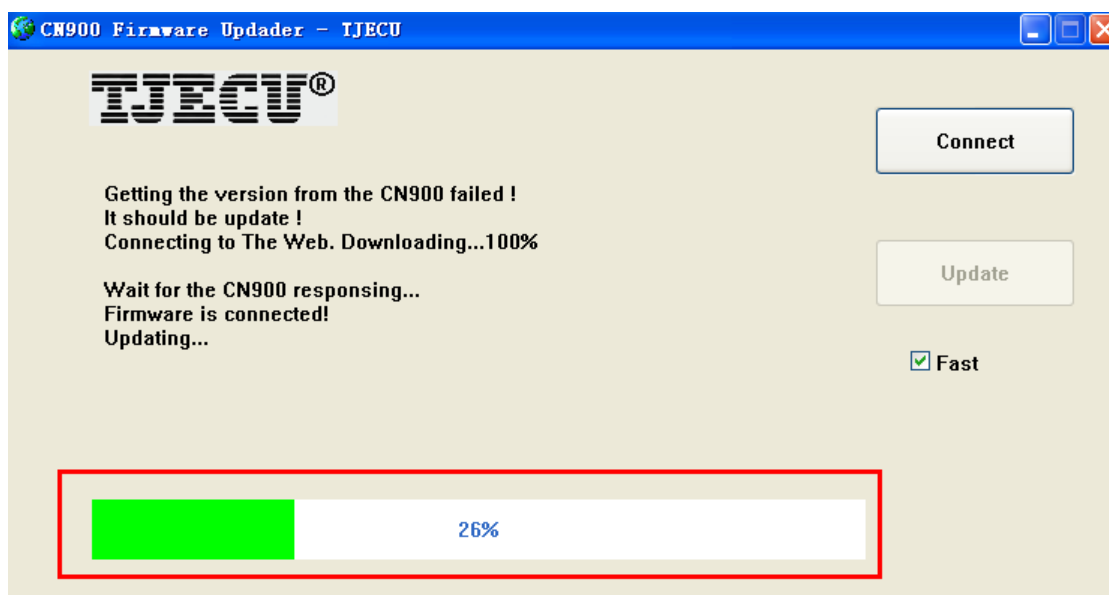
2. Click  and will download the update file from the Web service. If it show you 100% then it means the update is successful.



After you click the Update button which show in the computer screen and then go back the to CN900 and follow the steps 1 and 2. So you click the Setup. And then click the Update .After you click the Update in the CN900 then you will see the step 3 and setp 4 show in the CN900 screen.



And the upgrade progress bar will show in the PC



直至升级完成 The upgrade progress bar will complete 100%



Getting the version from the CN900 failed !
It should be update !
Connecting to The Web. Downloading...100%

Wait for the CN900 responding...
Firmware is connected!
Updating...
Update successfully!
Reboot CN900...

CN900 reboots successfully!

After you see CN900 reboots successfully so it means update successfully.

二. The attached module upgrade update

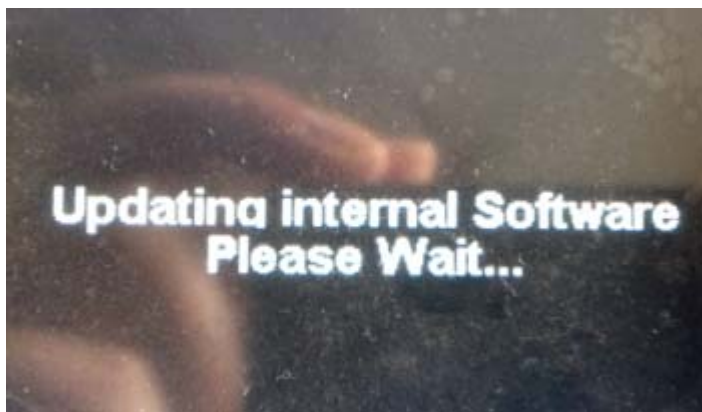
1. Open the CN900 PC upgrade procedure



Please Notice : Do not make Tick Fast

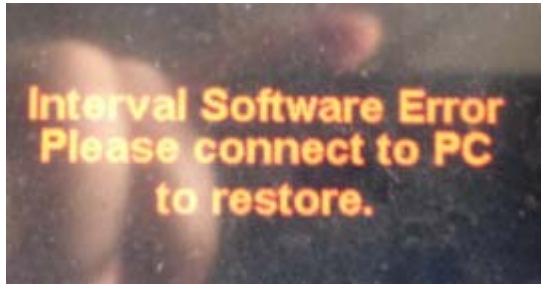
2. First click  and then click 

Upgrade progress bar will appear and CN900 screen will show you following information:

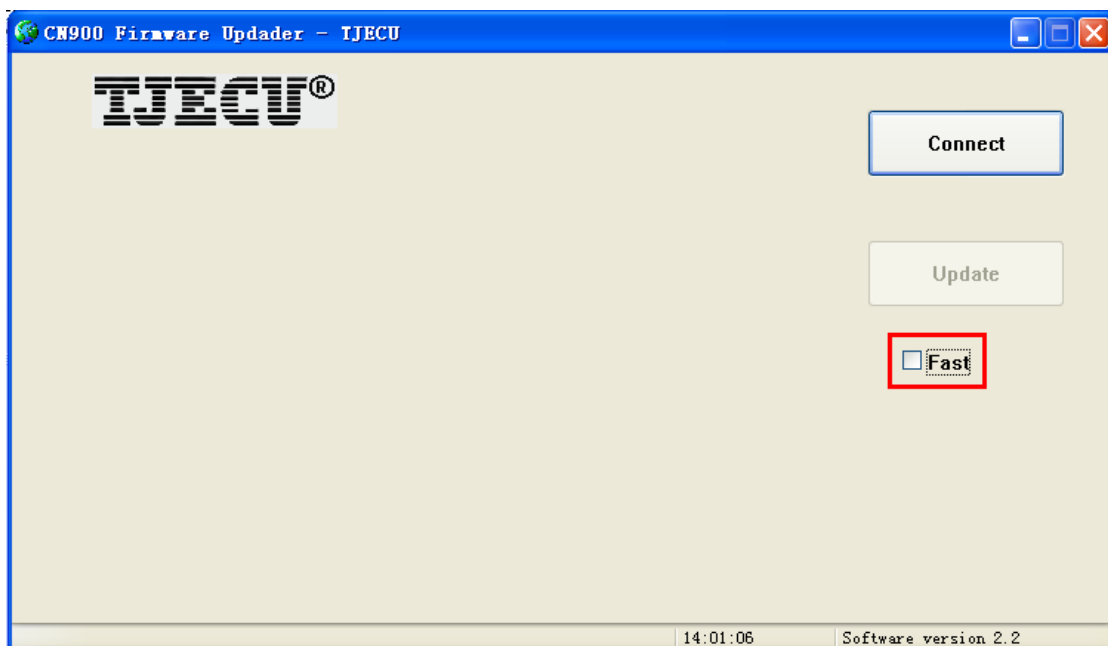


Turn off the CN900 power after 10 seconds and again turn on the power.



CN900 screen will show you following words:

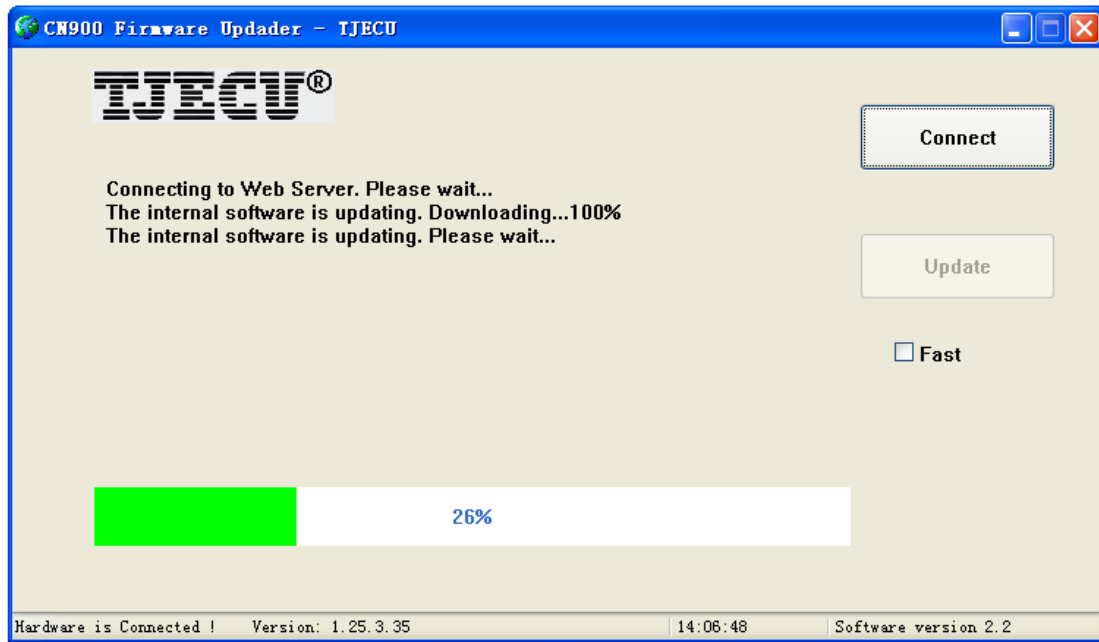


3. Re-open the CN900 PC upgrade program



Please Notice : Do not make Tick Fast

First click  and then click 



o

The upgrade progress bar will complete 100%

The entire update process is complete!