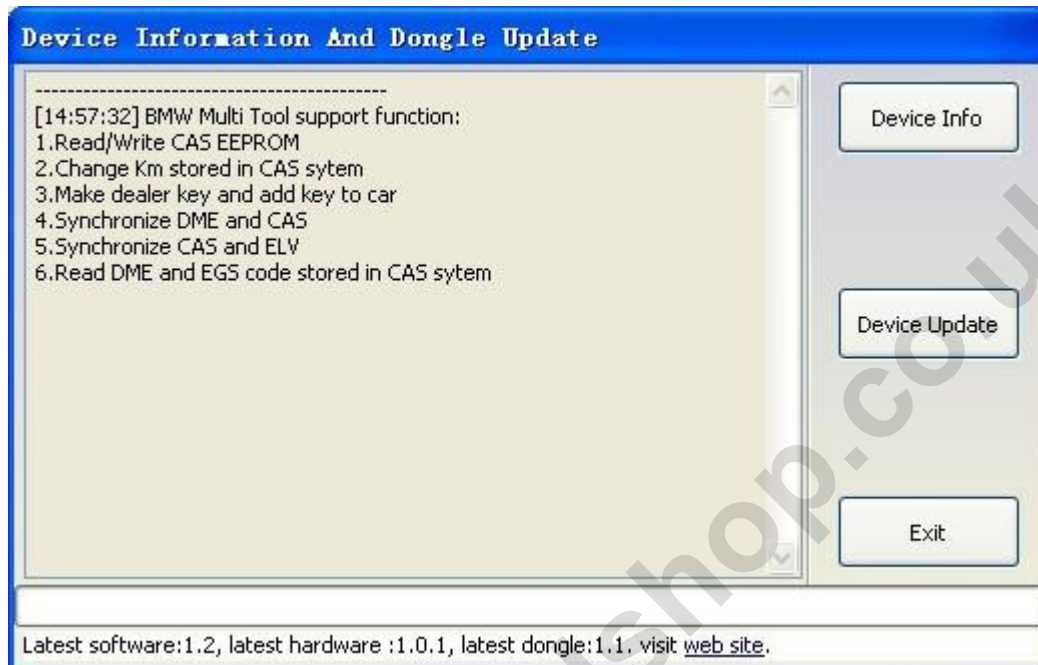
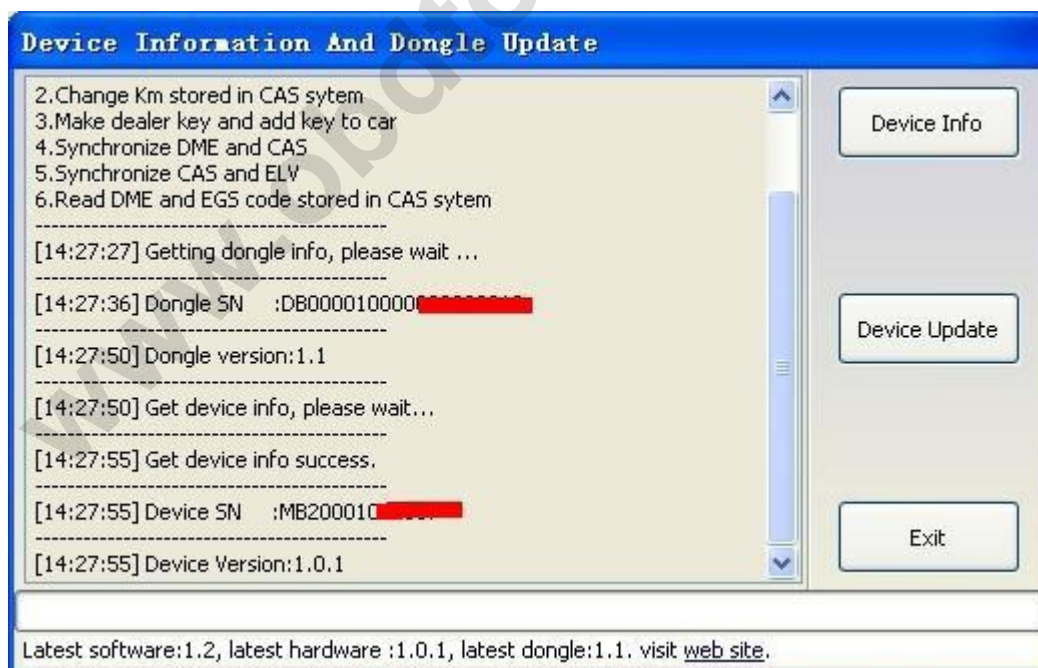


How to Update BMW multi tool CAS1 CAS2 CAS3 CAS3+ key programmer

Open this window after connect to internet. You can see BMW multi tool latest software version, firmware version, dongle version. You can go to our website for further information. After succeeded update BMW multi tool firmware, must reconnect the hardware to computer.



1. Device Info: Get dongle and hardware SN and version.



2. Device Update: This function can update the dongle and device.

