

KP-819 User manual

1. How to use the KP-819 to match the car keys.

KP-819 connect to the main cable, and plug in the car's OBD diagnostic interface.



Press [ENTER] to enter the menu.



Press [ENTER] to enter the vehicle selection. Press the arrow keys to select vehicles.



***The operation can be done according to the KP-819 tips.**

2.How to modify the language.

Press the arrow keys to select "LANGUAGESEETING".



Press [ENTER] to enter the language selection. Press the arrow keys to select language.



Press [ENTER] to modify the language of choice.



3.the menu HARDWARE TEST reserves , you can ignore it.

4.How to upgrade the KP-819.

Connect to the computer with a USB cable and KP-819.

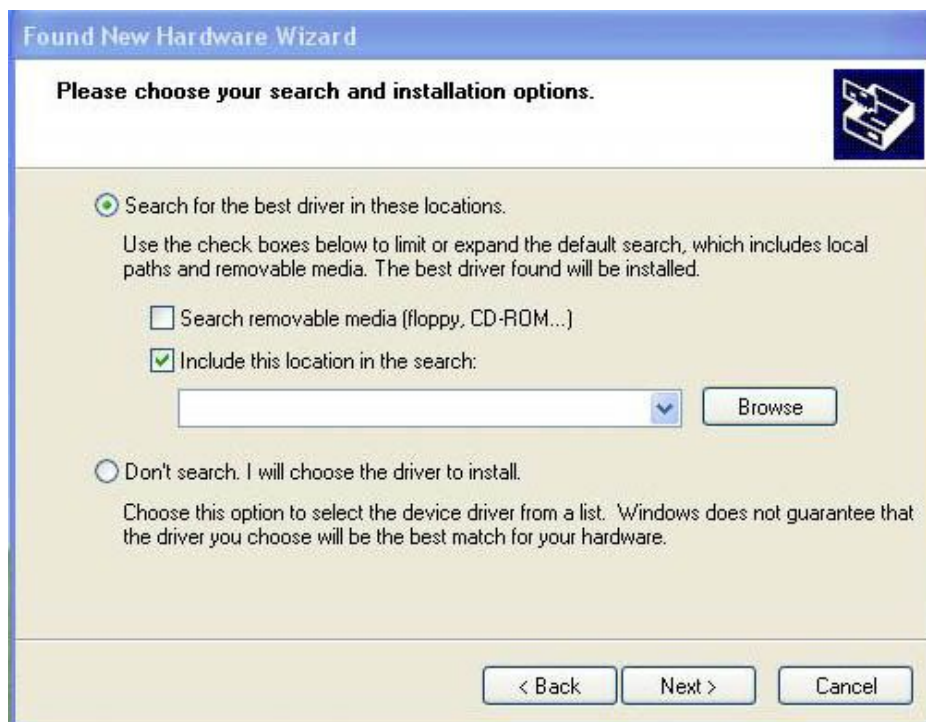


4.1 Installing the KP-819 driver

If this is the first time using the KP-819 connect to the computer to install the driver to normal use.



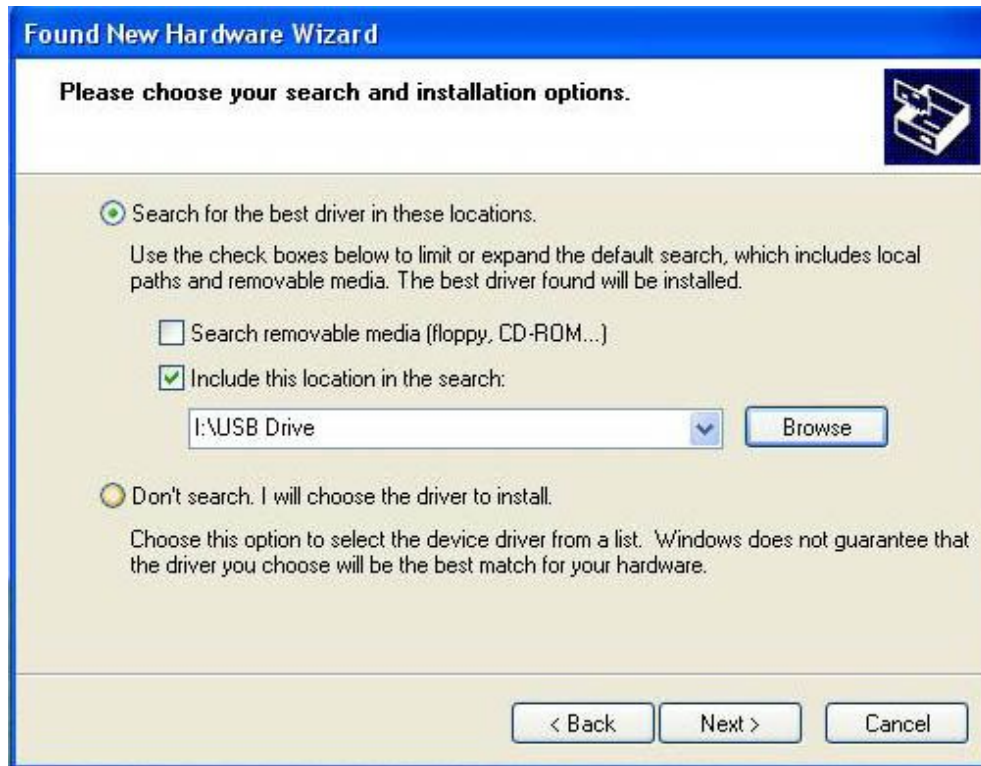
Select "Install a list or specific location (Advanced)", click "NEXT".



Select "Include this location in the search:", click "Browse".



Locate the folder where the disc "USB Drive", click "OK".



Click "Next".



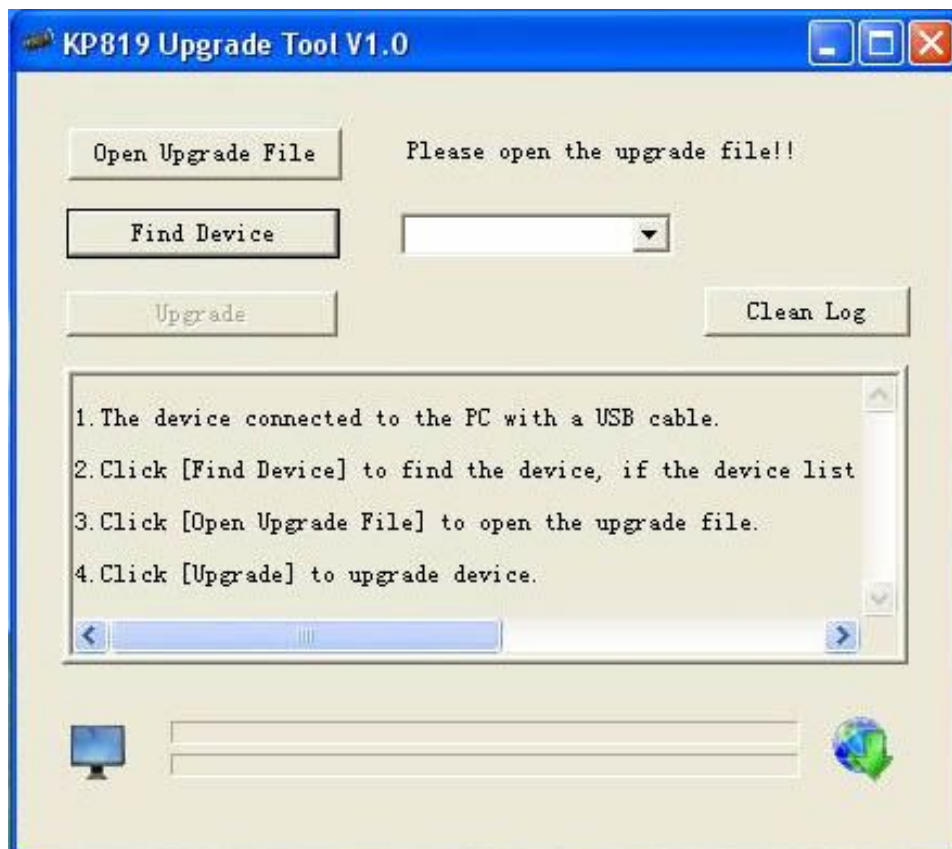
Click "Continue Anyway".



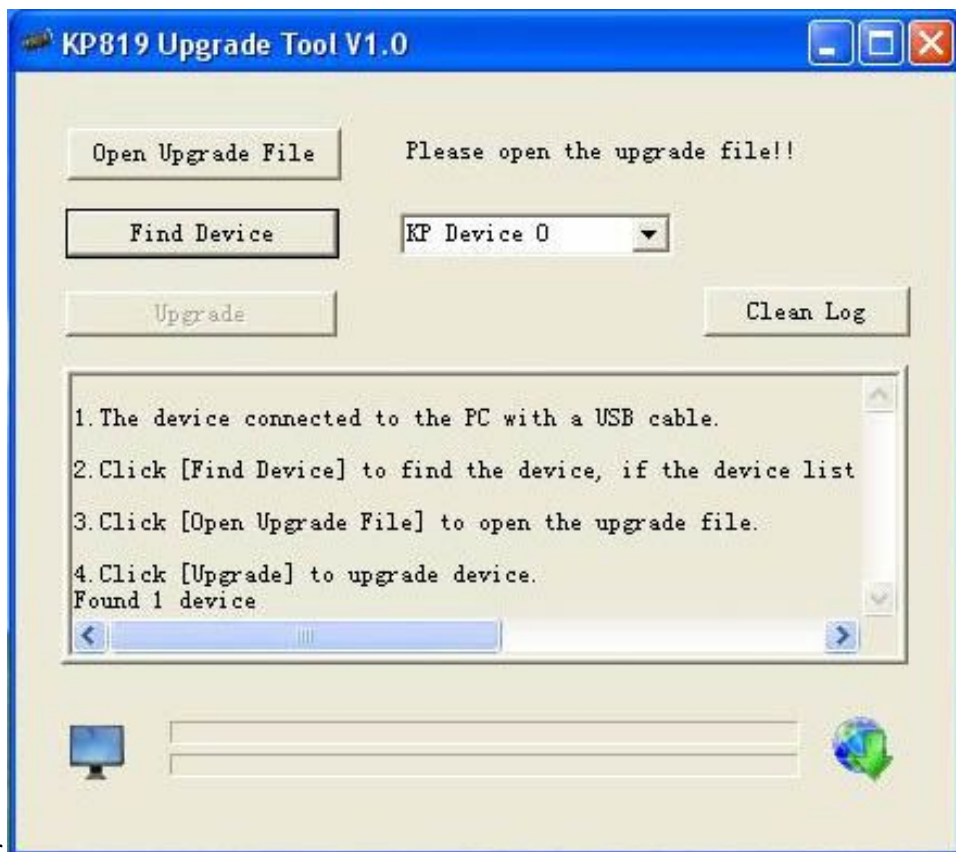
Click "Finish".

4.2 Upgrade the KP-819.

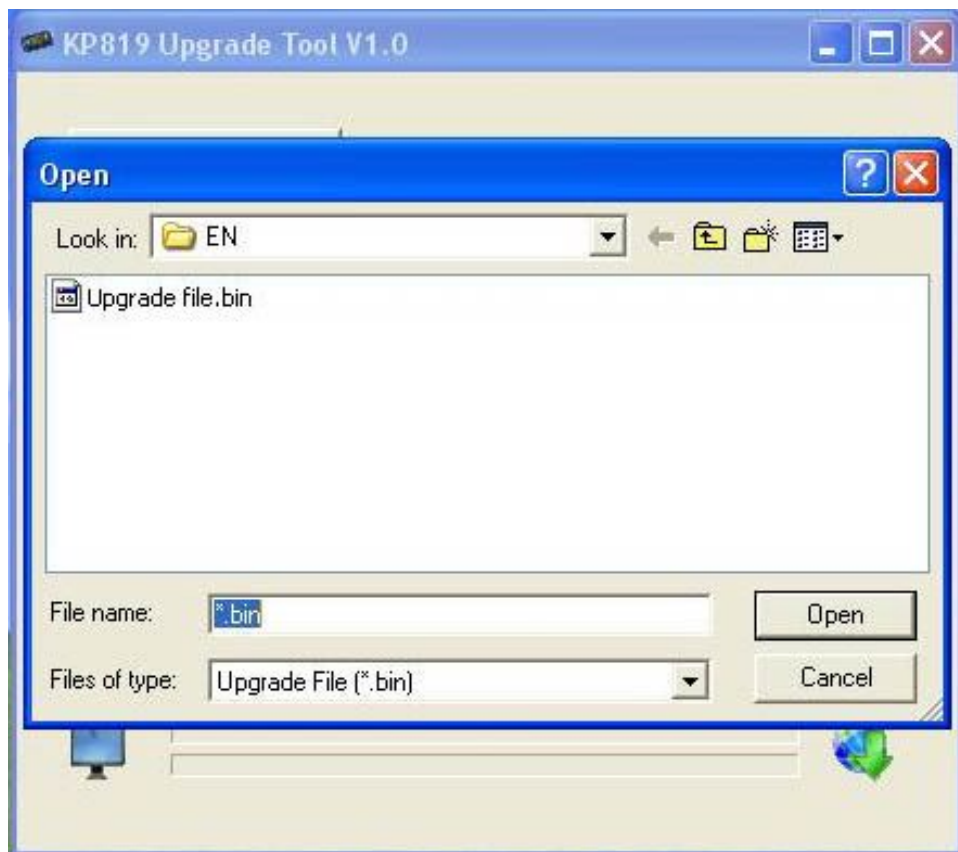
Run the KP-819 Upgrade Tool.

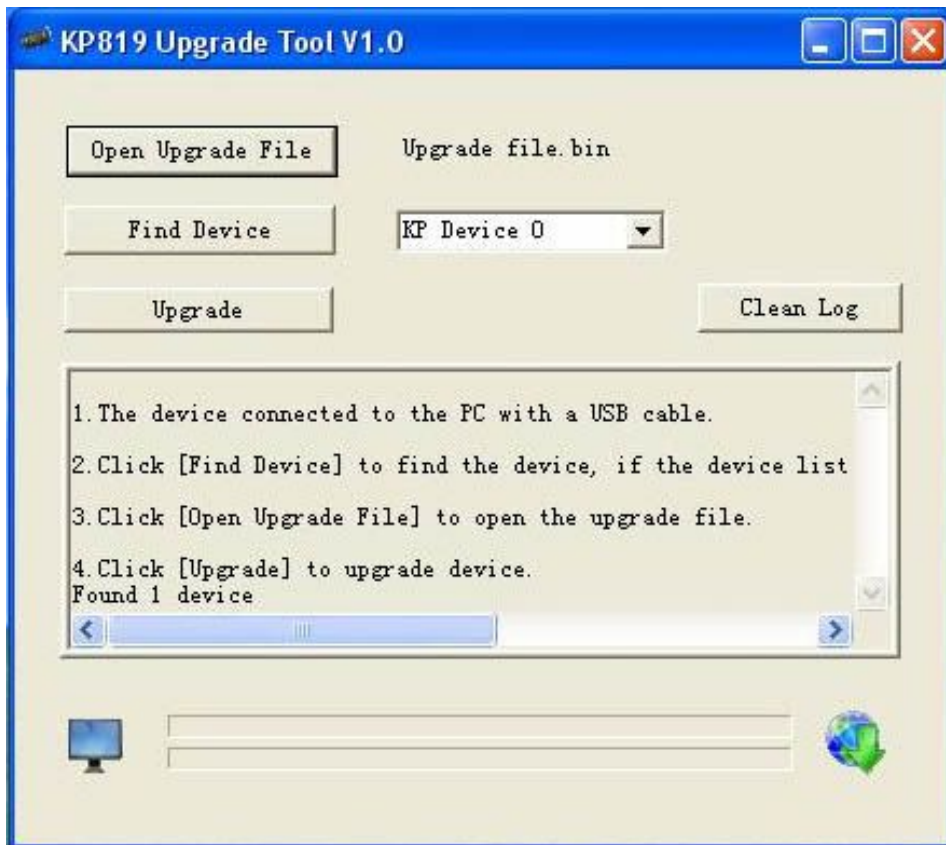


Click "Find Device", If the device list is empty, reconnect KP-819 or to install the

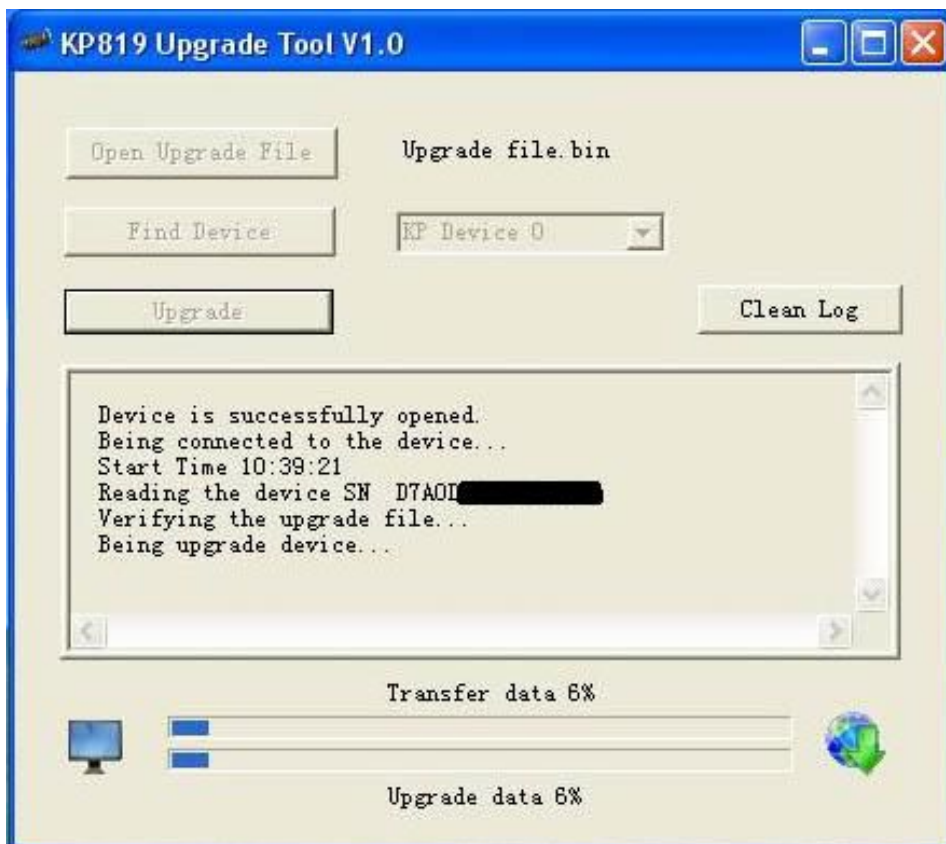


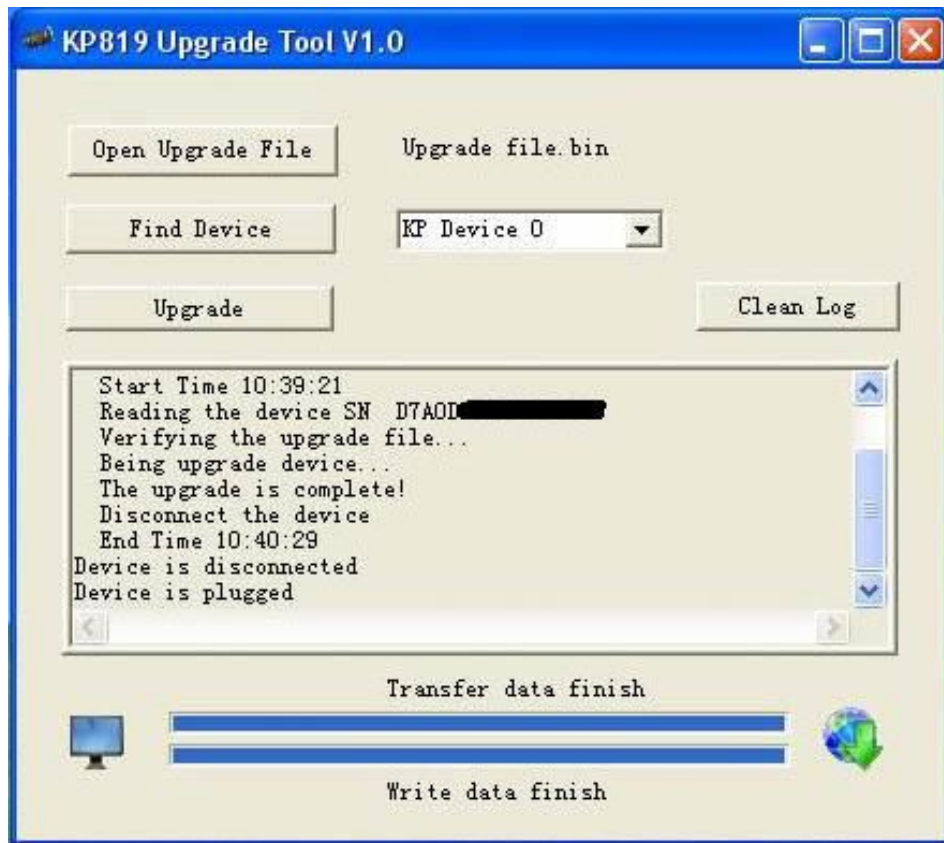
Click "Open Upgrade File" to Open the upgrade file from the dealer.





Click "Upgrade" to upgrade KP-819.





Upgrade finish.