

22.CN900 机器安装软件过程与功能  
22.CN900 install software and function.

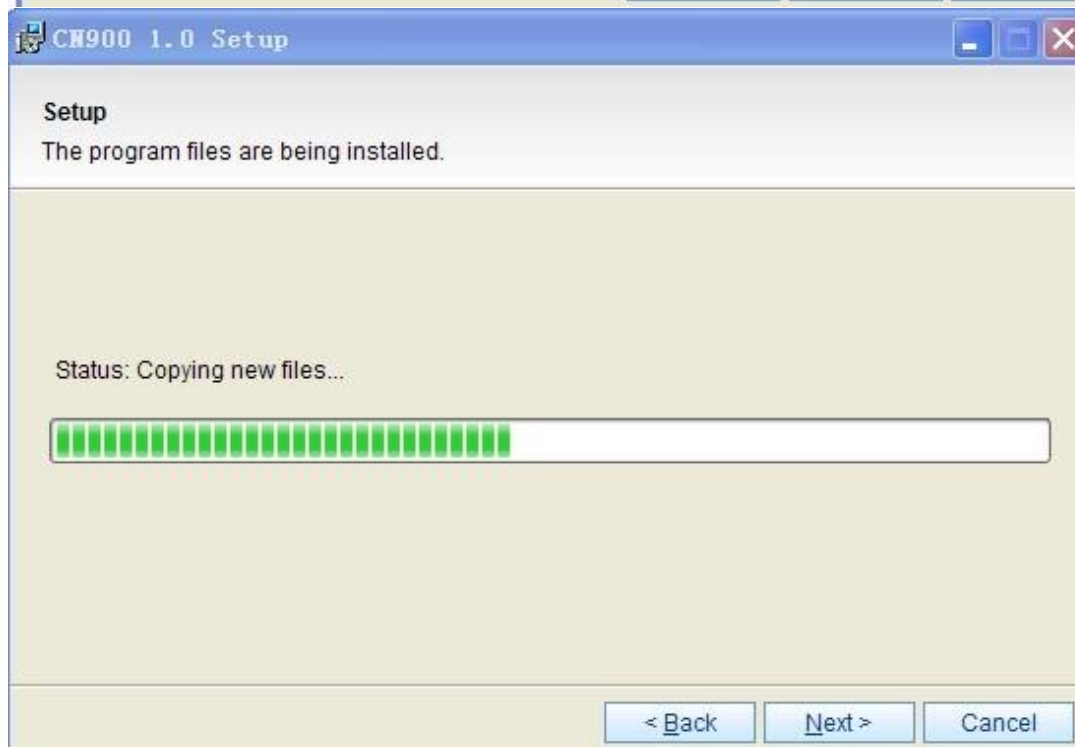
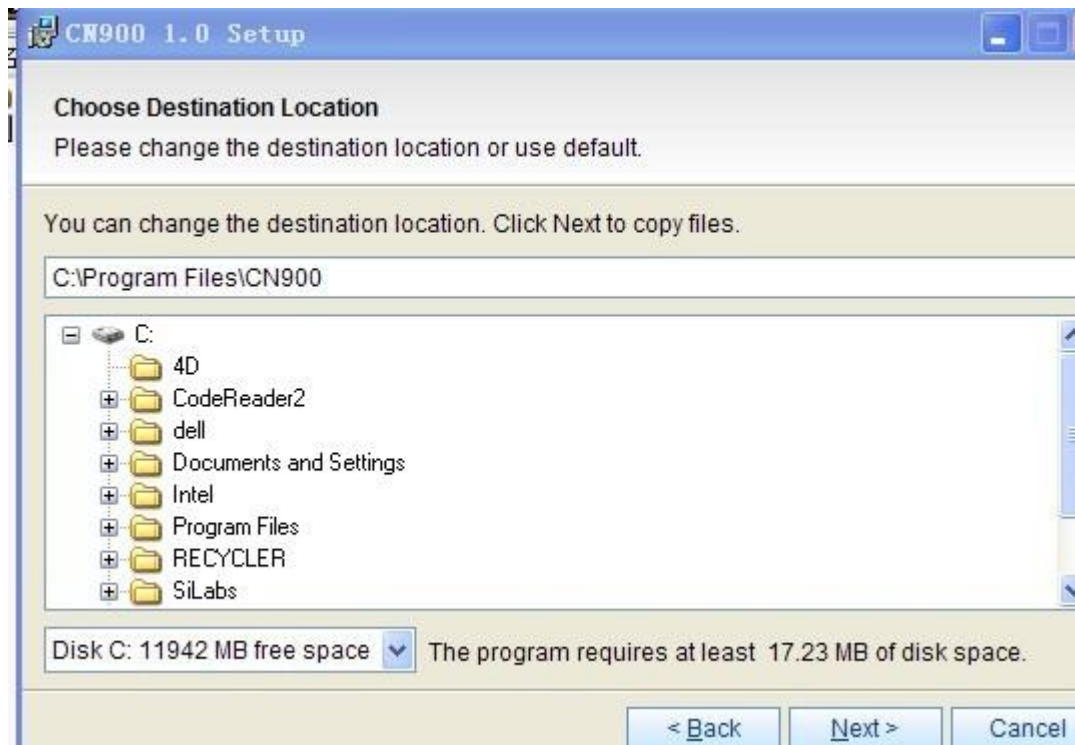
The screenshot shows a web browser window with the address bar containing `http://www.cn900.net/down/`. The website header features the logo **CN900.NET** and a navigation menu with items: Home Page, Product, News, Download, and Video. The main content area is titled **Relevant Download** and lists a download item: **Software, Manual** (CN900 Software). Below this, there is a **Download** button.

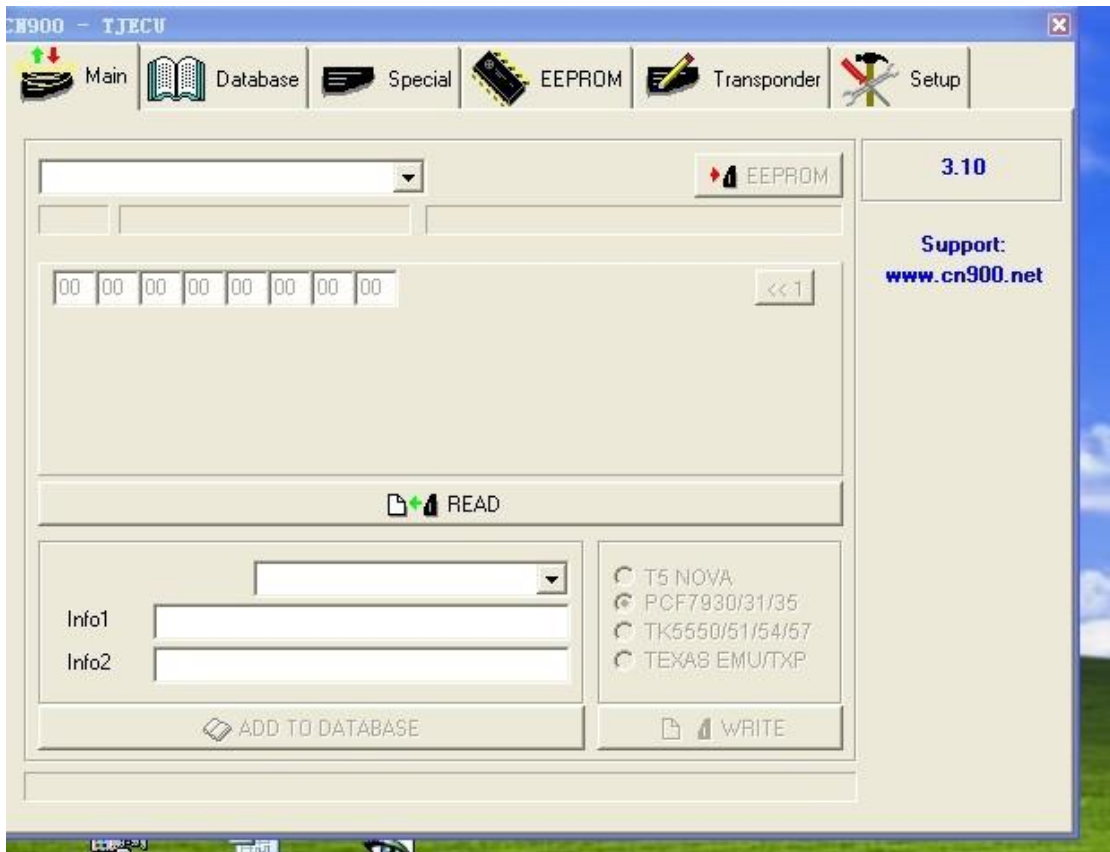
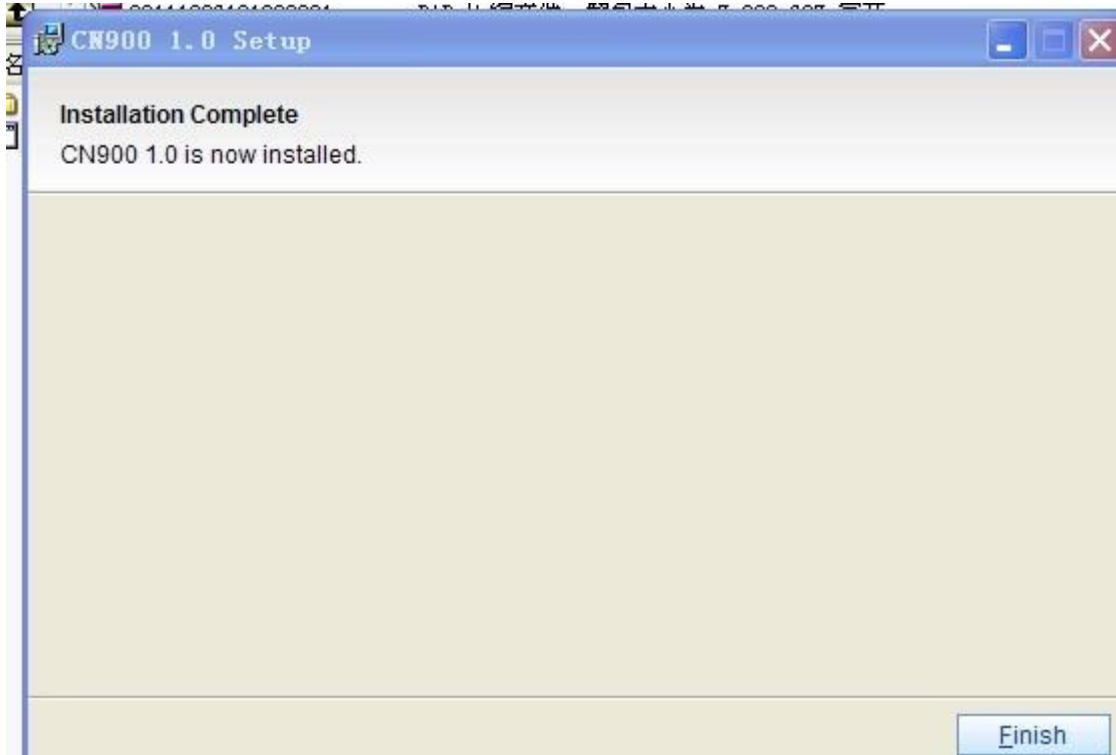
A file dialog box is open, asking "您想打开或保存此文件吗?" (Do you want to open or save this file?). The file details are:  
名称: 20111206191900001.rar  
类型: WinRAR 压缩文件, 7.09 MB  
发送者: www.cn900.net  
Buttons: 打开(O), 保存(S), 取消

Below the dialog, a download progress window is visible, showing the file is being saved. The progress bar is nearly full. The window displays:  
正在保存:  
20111206191900001.rar 来自 www.cn900.net  
估计剩余时间: 3 秒(已复制 5.84 MB, 共 7.09 MB)  
下载到: C:\Documen... \20111206191900001.rar  
传输速度: 393 KB/秒

At the bottom, a taskbar shows the file `CN900.exe` with a size of 7,823,697 bytes and a date of 2011-12-6 1... The system tray shows the date 2011-12-6 1... and the system ID CDD2F5BE.







COM

Language

COM

Language

**CONNECT**

rel

S/N

S/N2

Additional modules

1. Renault Laguna II  
2. Iveco  
3. Renault Megane

**CN900 - TJECU**

Main Database Special EEPROM Transponder Setup

63 Texas CRYPTO EEPROM 3.10

Support: [www.cn900.net](http://www.cn900.net)

03 00 07 65 44 01 00 00 00 00 00

ID1: E88692  
ID2: DBE92F

READ

Info1   
Info2

ADD TO DATABASE

T5 NOVA  
PCF7930/31/35  
TK5550/51/54/57  
 TEXAS EMU/TXP

WRITE

OK

HTAG2

Configuration

PSW: 4D 49 4E 52  
4F 4E

Factory

Mode

Password mode  
 Crypto mode

Transponder

PCF7936  
 PCF7942/44  
 PCF7943  
 PCF7946

Detect

31	bits	0	TM
0	00 00 00 00	00	SN/IDE
1	00 00 00 00	00	Crypto/ISK Lo
2	00 00 00 00	00	Crypto/ISK Hi
3	00 00 00 00	00	TMCF/PSW
4	00 00 00 00	00	User 0
5	00 00 00 00	00	User 1
6	00 00 00 00	00	User 2
7	00 00 00 00	00	User 3
4	00 00 00 00	00	RSK Lo
5	00 00 00 00	00	RSK Hi
6	00 00 00 00	00	PCF
7	00 00 00 00	00	SYNC

IDE

1  1

2  2

3  3

4  4

5  5

6  6

7  7

0-7

4  4

5  5

6  6

7  7

Save TM Load TM Load config Load TM + config

Transponder Setup

H900 - TJECU

Main Database Special EEPROM Transponder Setup

1. Opel IMMO2 Siemens [TP]

TMS370C702 256 bytes  
Opel  
ID: 40  
Transponder type: PCF7935 precoded  
Transponder is ready programmed to start the vehicle

DUMP

Format  
 8 bit  16 bit

Open file View file

PROGRAM TRANSPONDER

CALCULATE PIN

Transponder PIN

