


VNCI NANO

There are a total of 6 software tested by VNCI NANO equipment, including: 1.**ODIS V9.0**, 2.**TIS V17.00**, 3.**HDS V3.102**, 4.**FORSCAN V2.3.48**, 5.**PCMFLASH V1.2.0**, 6. **SCANMASTER V2.1**.

This manual contains the method of connecting VNCI NANO to these software and the installation method of some software. Please read this manual carefully before use, each software needs to select VNCI NANO interface when using, among which the anti-theft function of HDS software needs to change the registry before it can be used. The Volkswagen ODIS software is difficult to install and needs to be solved by the customer. Do not change the installation path of all software during installation. By default, they are installed on the C drive. The specific operation methods of all software are in the pictures below. The download link of the software, you can contact your seller to get it or download it directly from this link:

All software needs to install the driver of the VNCI NANO device when using it, download

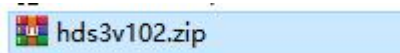
 VNCINanoDriverSetup_vc_x86_1v0.exe	2022-09-21 10:32	应用程序	36,196 KB
--	------------------	------	-----------

Double click to install.

If you have any questions during use, please contact your seller for technical support in time.

Honda

1. decompress



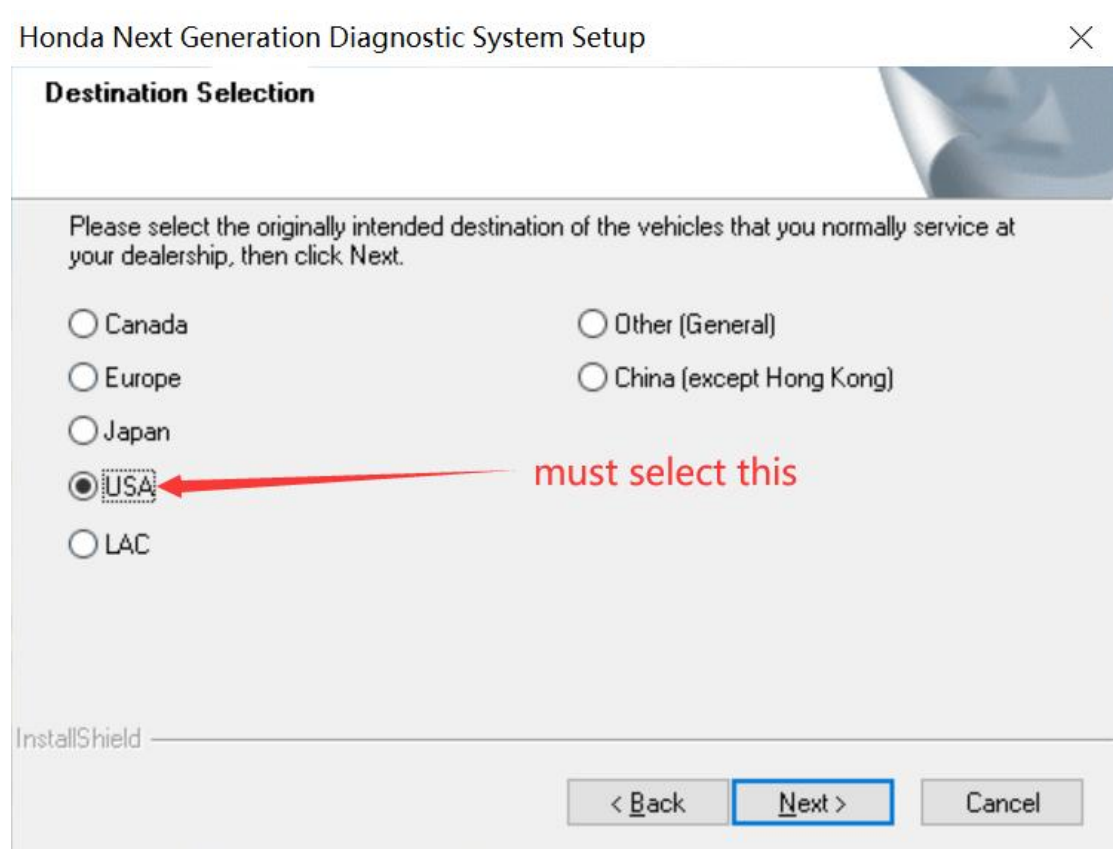
2. Open the folder



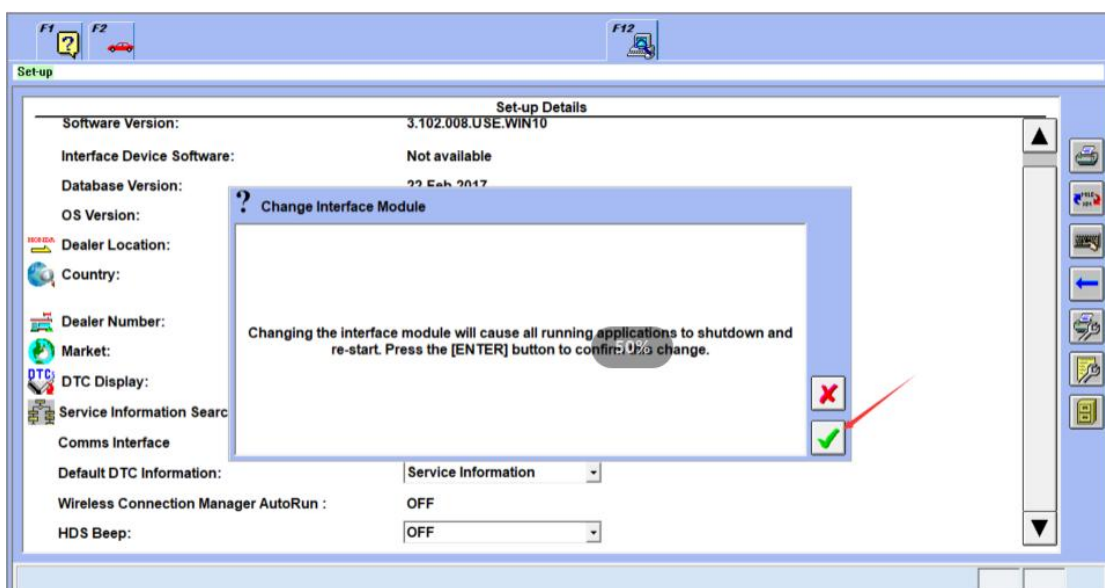
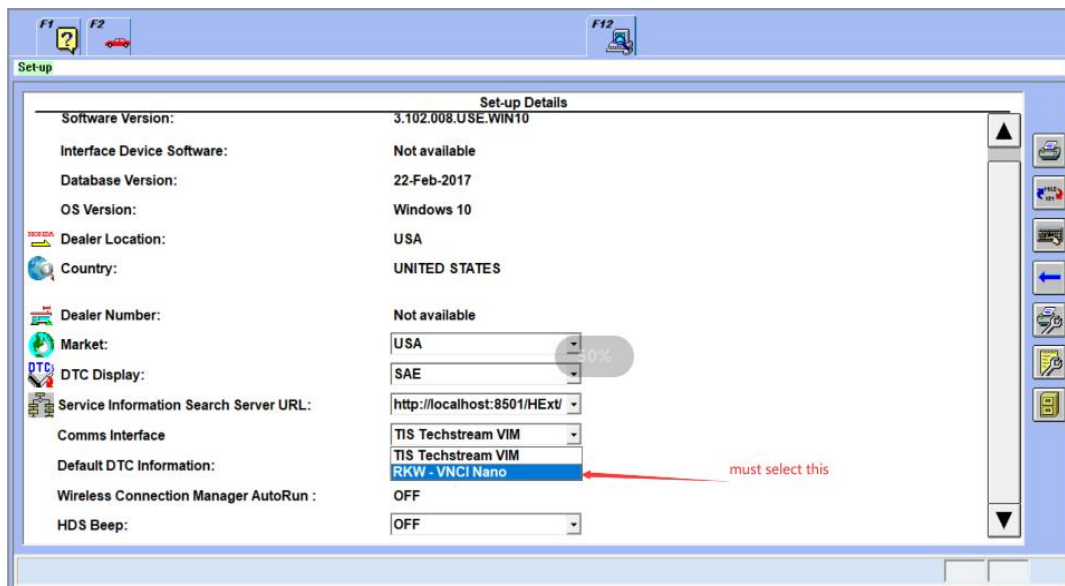
, find the setup.exe program, and double-click it to run,

名称	修改日期	类型	大小
0x0416.ini	2010-06-22 12:40	配置设置	2
0x0419.ini	2010-06-22 12:43	配置设置	2
0x0421.ini	2010-06-22 12:37	配置设置	2
0x0424.ini	2010-06-22 12:45	配置设置	2
0x0804.ini	2010-06-22 12:49	配置设置	1
0x0816.ini	2010-06-22 12:41	配置设置	2
Autorun.inf	2017-02-22 12:24	安装信息	
data1.cab	2017-02-22 12:26	WinRAR 压缩文...	10,65
data1.hdr	2017-02-22 12:26	HDR 文件	33
data2.cab	2017-02-22 12:27	WinRAR 压缩文...	84,86
dmm.ini	2017-02-22 12:24	配置设置	
ISSetup.dll	2010-09-20 8:39	应用程序扩展	56
layout.bin	2017-02-22 12:27	BIN 文件	
pc_release_id.txt	2017-02-22 12:27	文本文档	
setup.bmp	2017-02-22 12:24	BMP 图片文件	48
setup.exe	2017-02-22 12:26	应用程序	78
setup.ini	2017-02-22 12:26	配置设置	

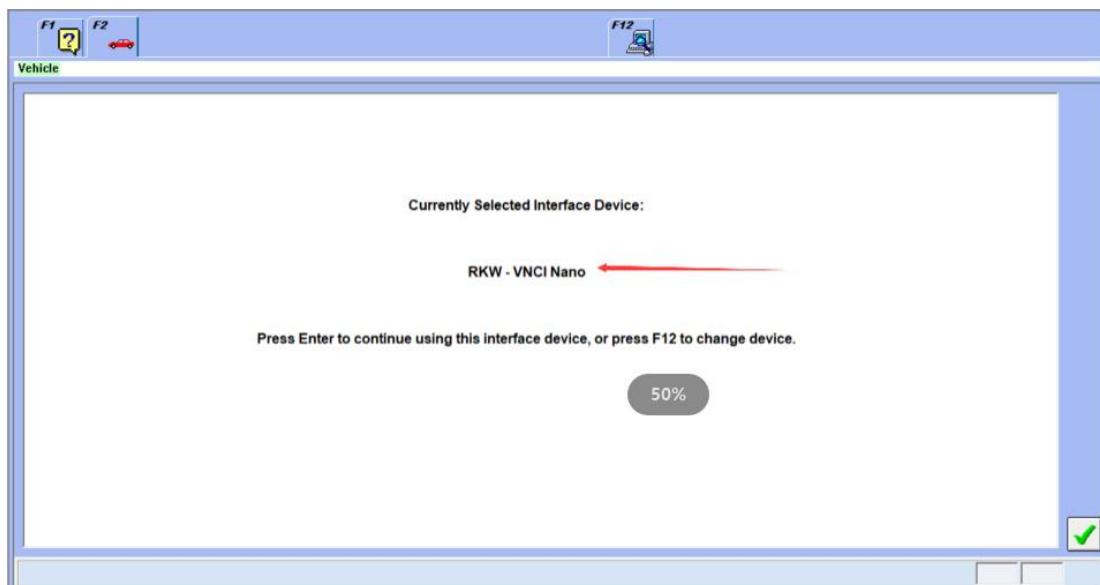
3. When the option to select a region pops up, the North America region must be selected



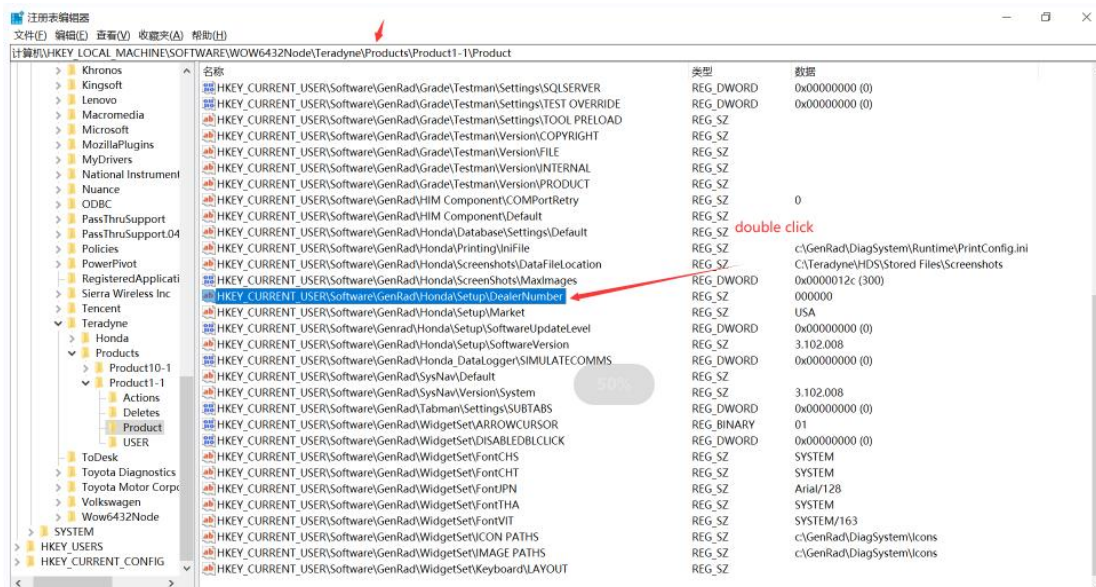
4. After the installation is complete, the first time you run the HDS software, you need to change the interface settings to use the VNCI NANO device.

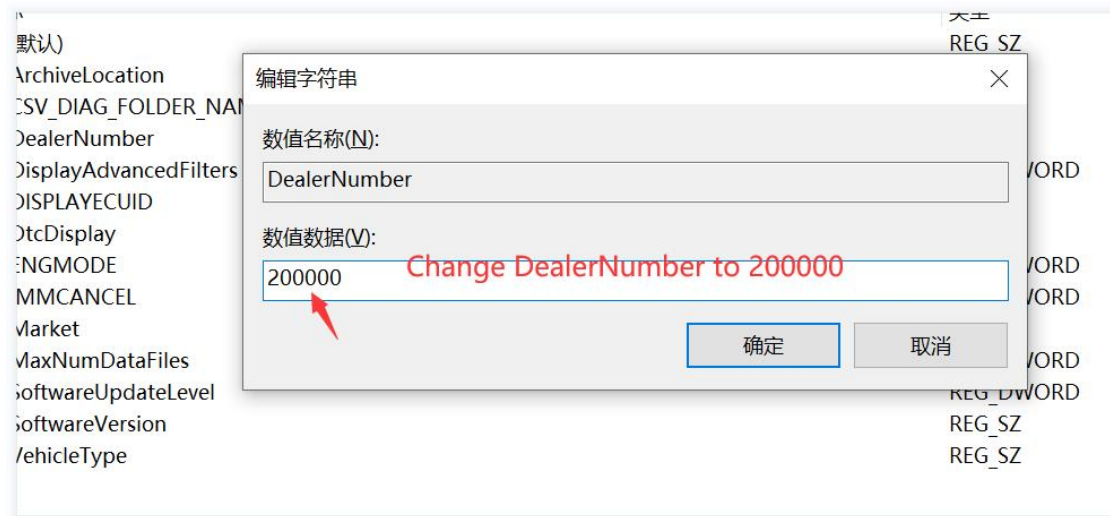
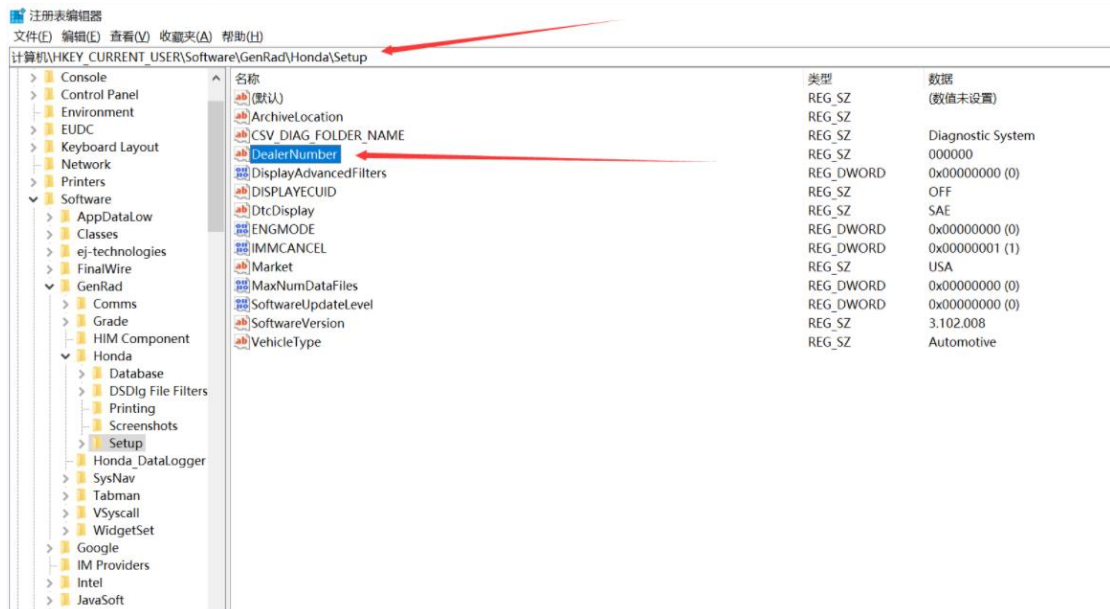
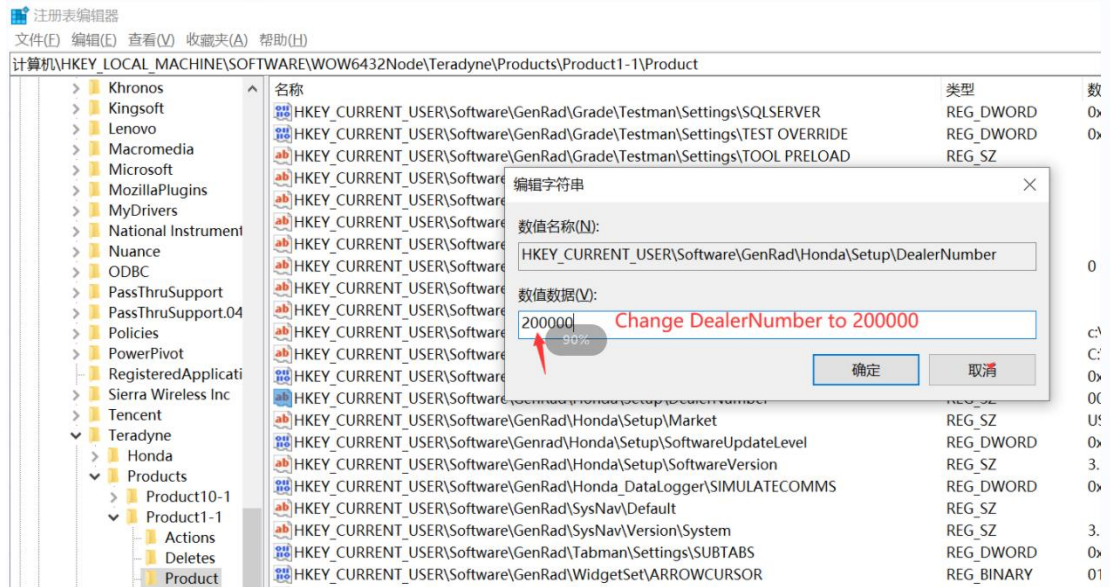


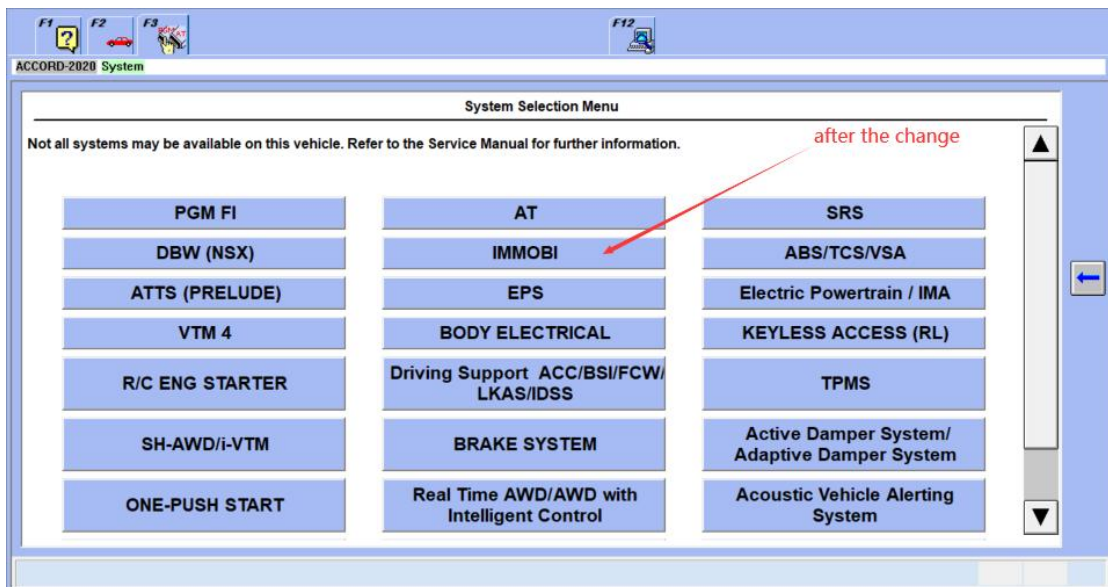
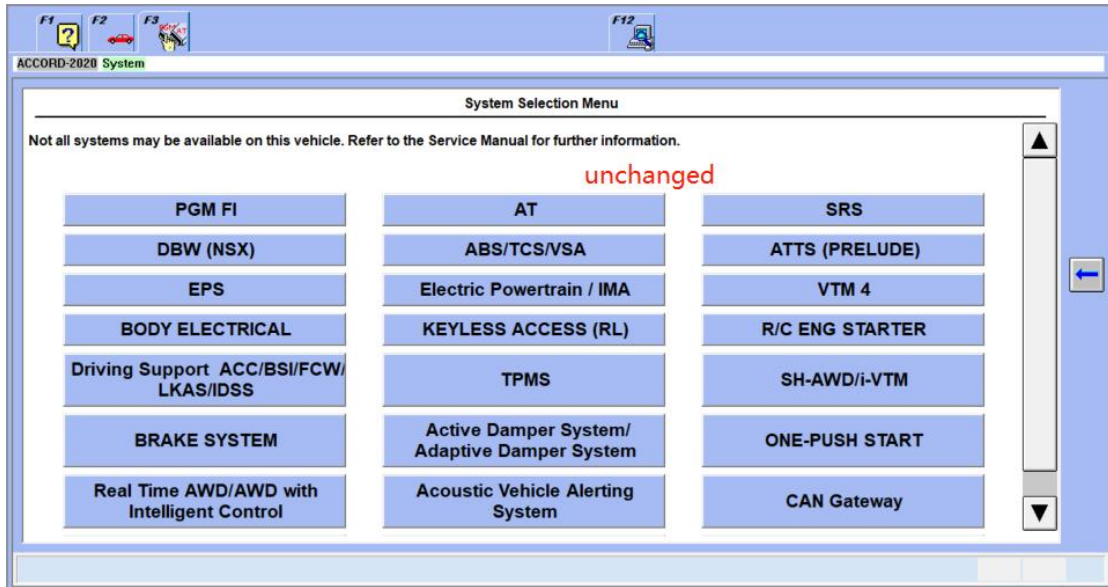
5. Display the content in the picture below, you can use it normally



6. For customers who need to use the HDS anti-theft function, they also need to change the registry information before they can be used. Operation steps: Search **regedit** on the shortcut bar of the computer and enter the Registry Editor, find: the corresponding directory Change the value data to 200000 The specific operation steps are shown in the following pictures, and there are two changes in total. After the change, connect the vehicle and enter the software, there will be an anti-theft option, and if it is not changed, there will be no anti-theft option.








TIS

1. Double-click to run the program and click Next to complete the installation.

 Techstream_Setup_V17.00.020.exe

Techstream Software - InstallShield Wizard

Customer Information
Please enter your information.

Please enter your name and the name of the company for which you work.

User Name:

Company Name:

90%

InstallShield

< Back **Next >** Cancel

Techstream Configuration (S822-01)

Please input the following information.

Required Information
This information is used for error report follow up.

Dealer Name:

Dealer Code:

Dealer Phone:

Dealer Country /Region:

This selection is used to configure Techstream network settings.

User Type:

Example:
Dealer's User

Optional Information
This information will appear on the header of printed reports.

Dealer Address:

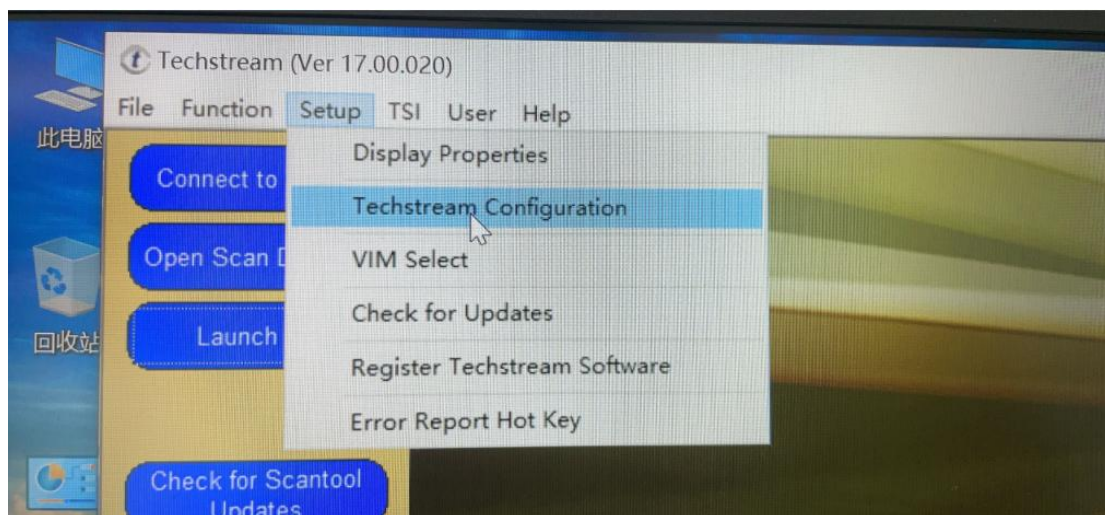
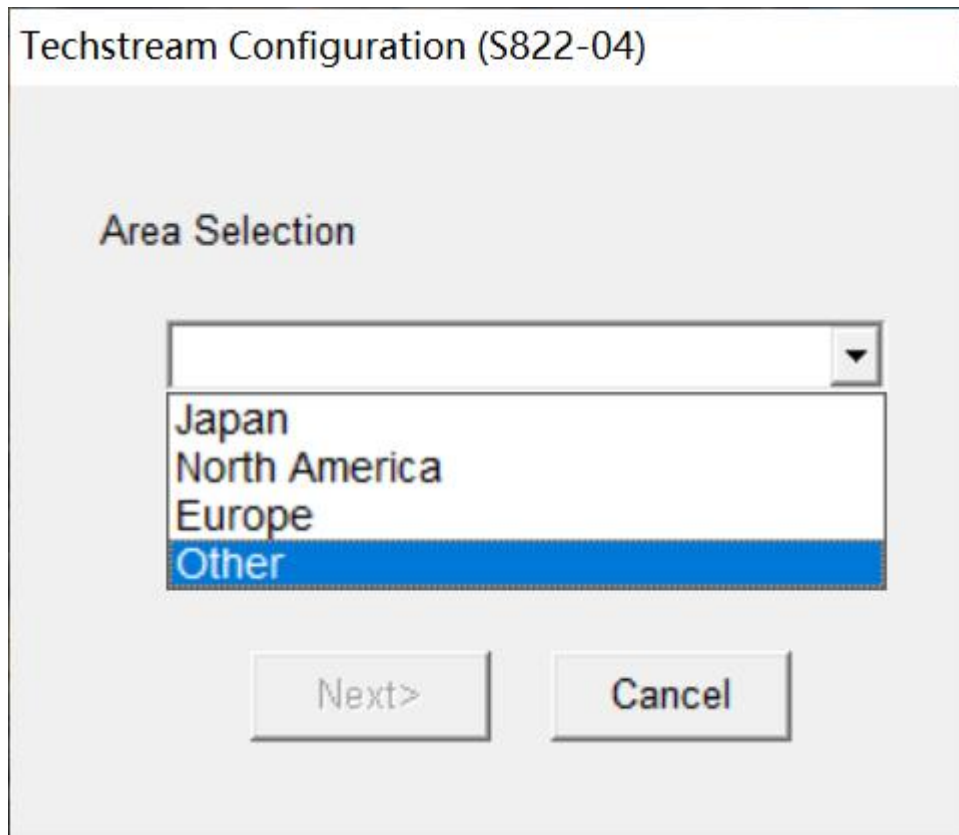
Dealer Email:

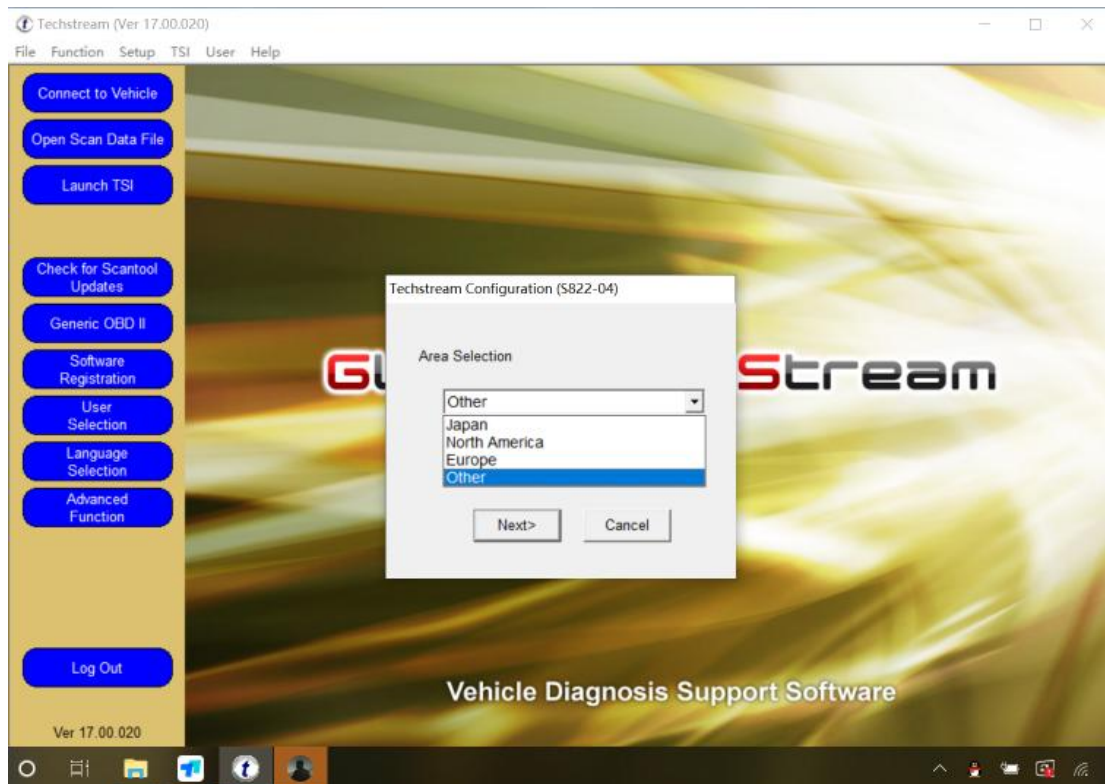
Dealer Website:

OK Cancel

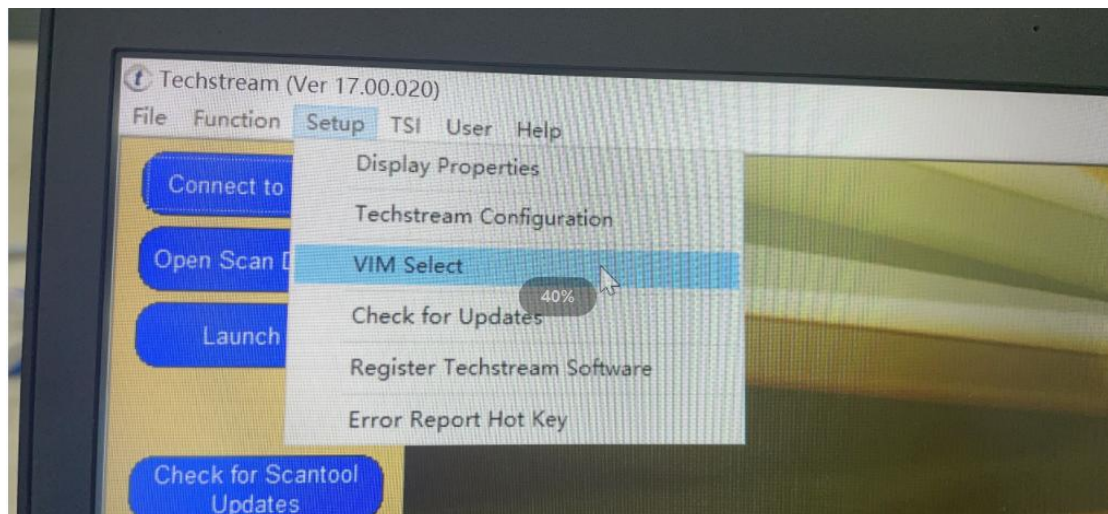
2. When you open the software for the first time, you will be prompted to select an area, just select the area corresponding to the vehicle, and you can also change it in the software later.

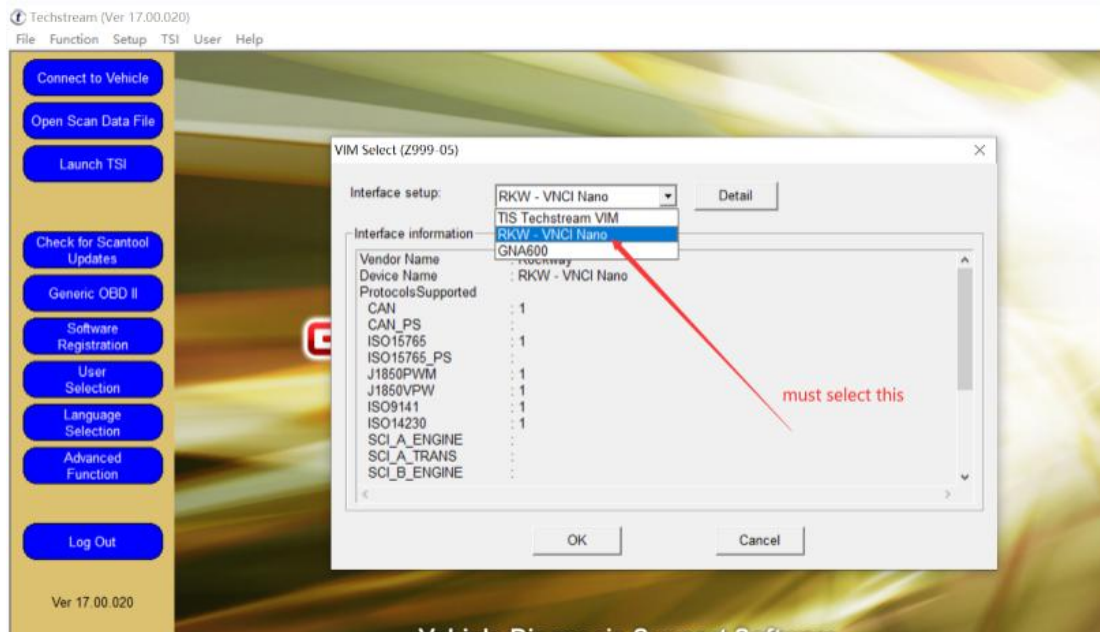
2. When registering, confirm the area -- software version number - each area needs to be registered when it is used for the first time, and the registration time can be selected at will.





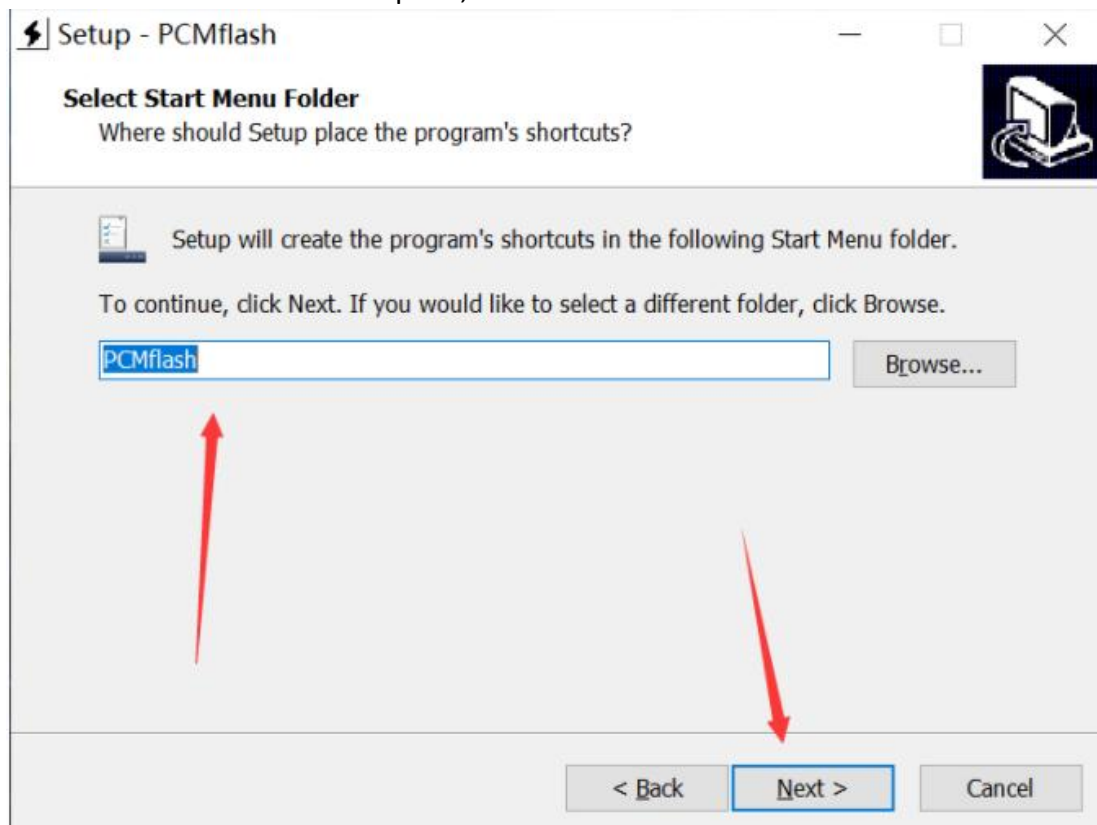
4. After the registration is completed, you need to select the VNCI NANO interface before you can use the device. ◦

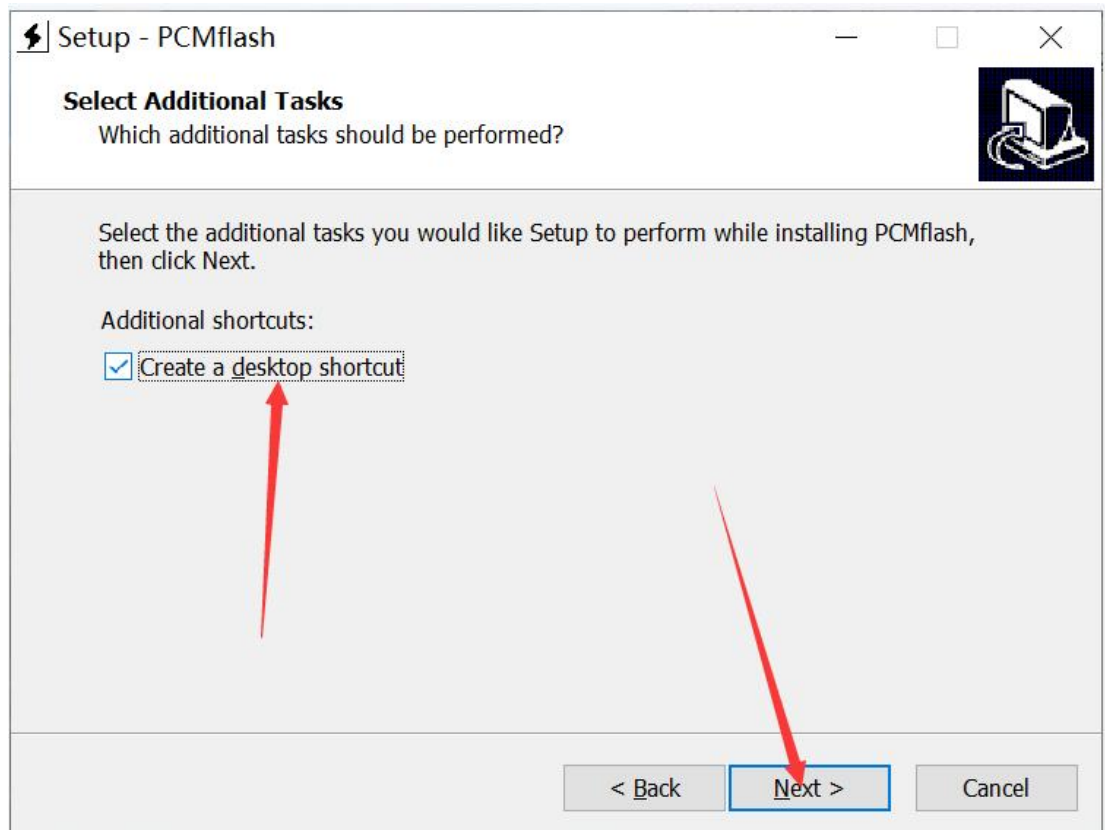
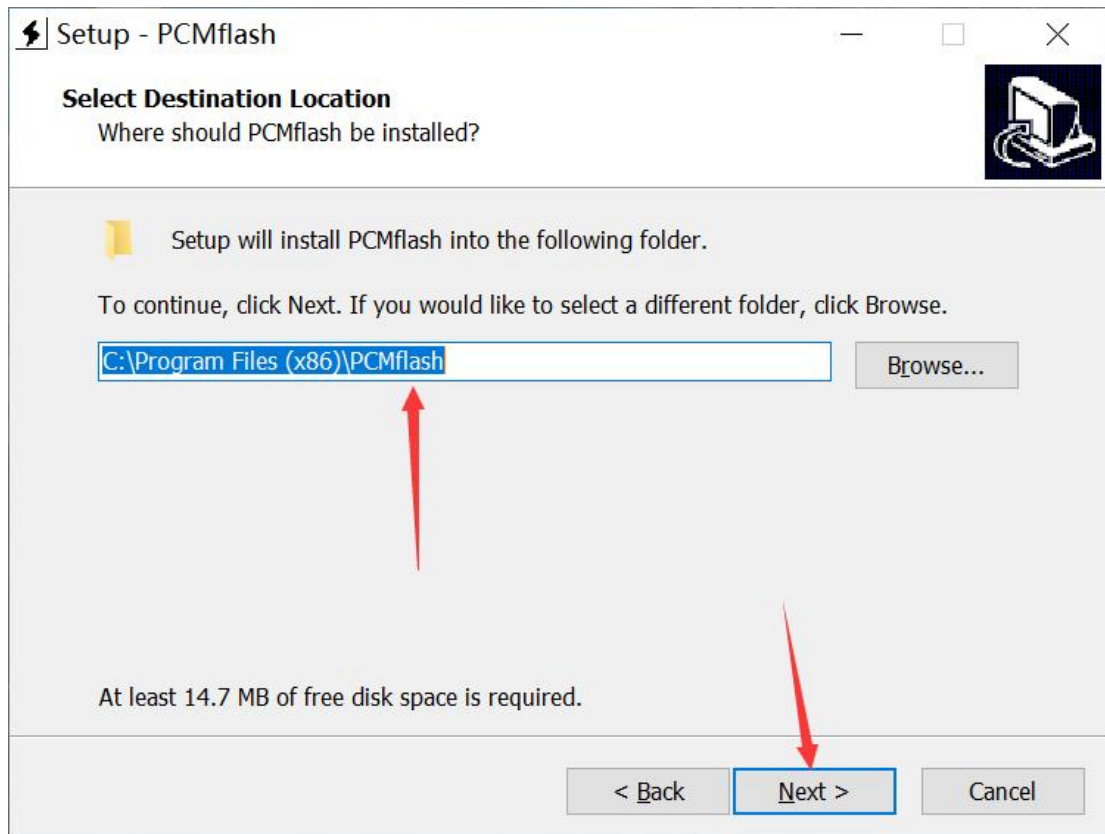


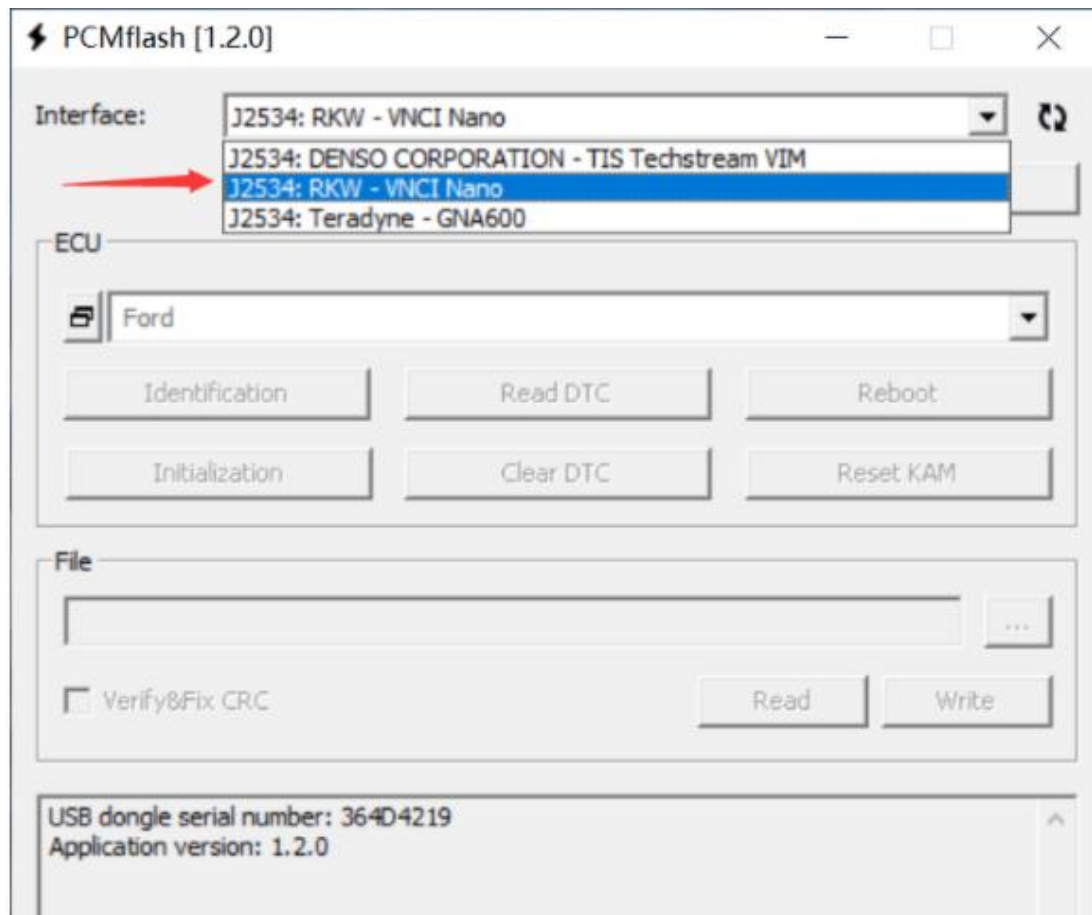


PCMFLASH

1. PCMFLASH software is special and needs to be solved by customers themselves
2. After the installation is complete, select the VNCI NANO interface to use




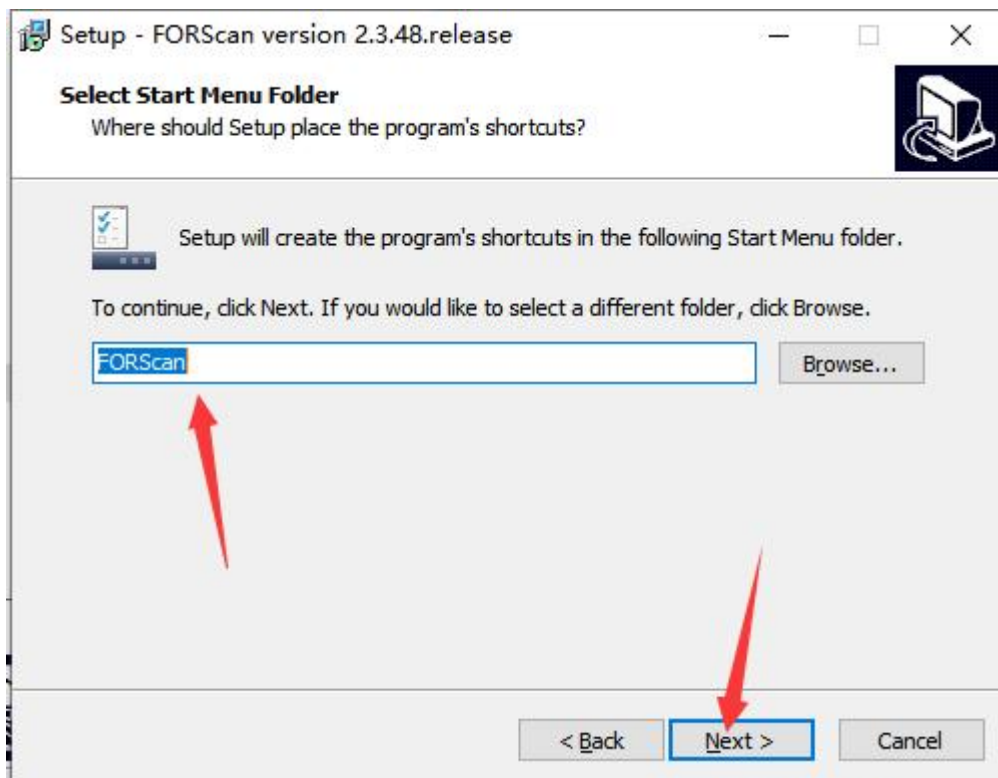
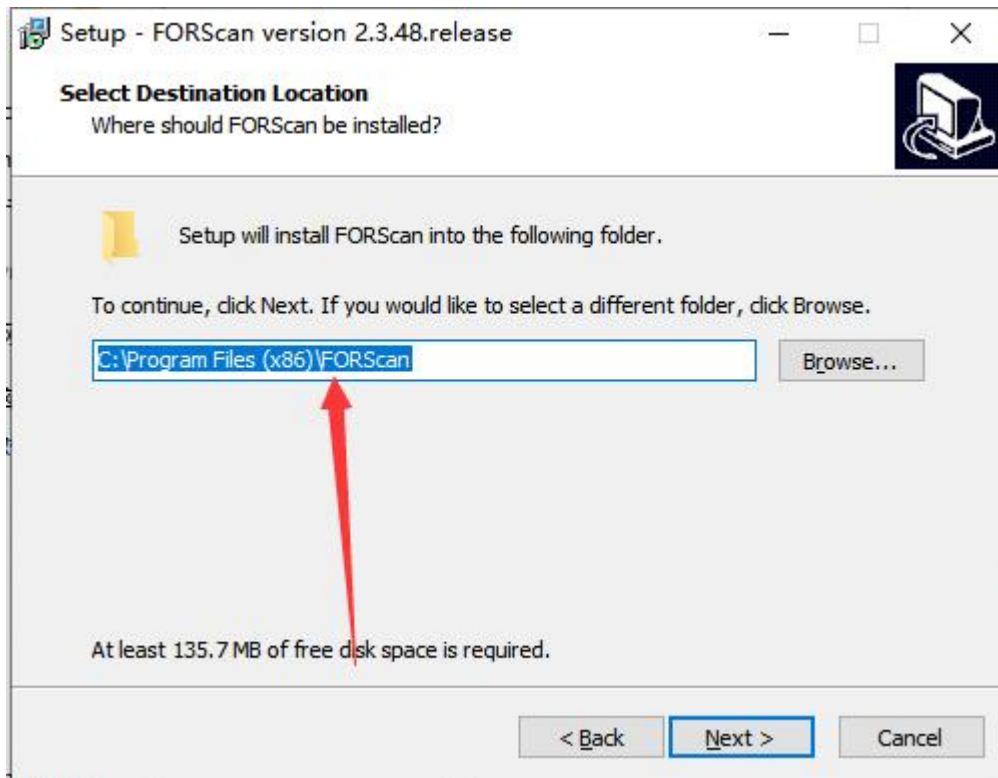


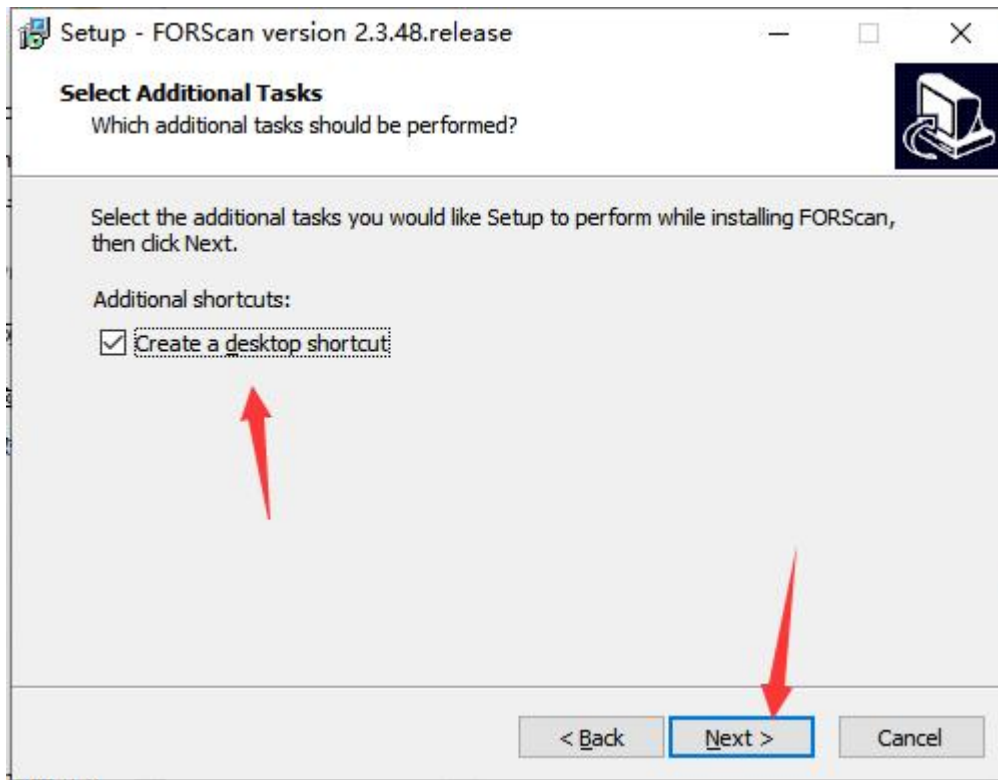


FORSCAN

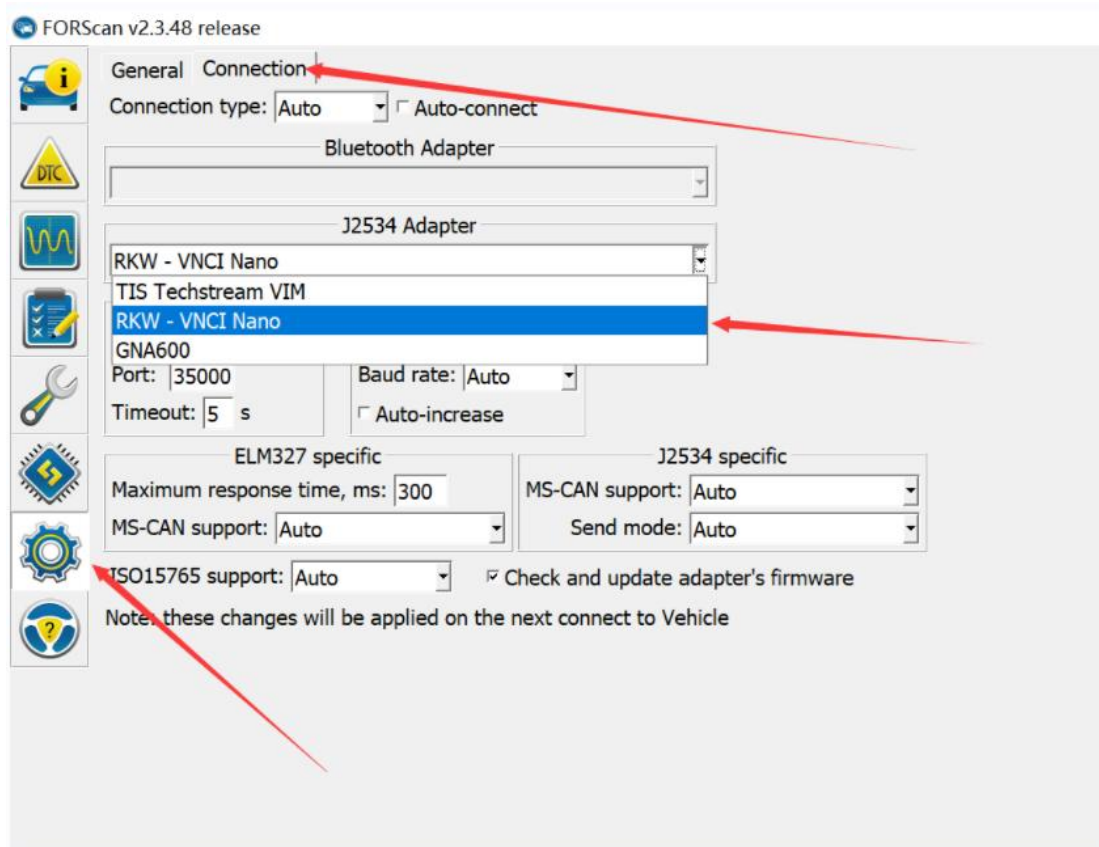
1 .Double-click to run and click Next to complete the installation .

 FORScanSetup2.3.48.release.exe





2 After the installation is complete, select the VNCI NANO interface to use



SCANMASTER

1. Since the SCANMASTER software needs to be registered, we only have the cracked version of V2.1 for the time being. If you have other versions of the cracked software, you can contact your seller to communicate with us. The specific registration steps and installation steps are described in detail in the SCANMASTER software installation package
2. After receiving the software, turn off the anti-virus software, do not anti-virus.



3. Click to install ScanMasterELM_2.1..

4. Click on the desktop



copy Install Code: FC82B5AC1D8ED , click in the ScanMaster-ELM v2.1 folder,



KeyGen-scanmaster...

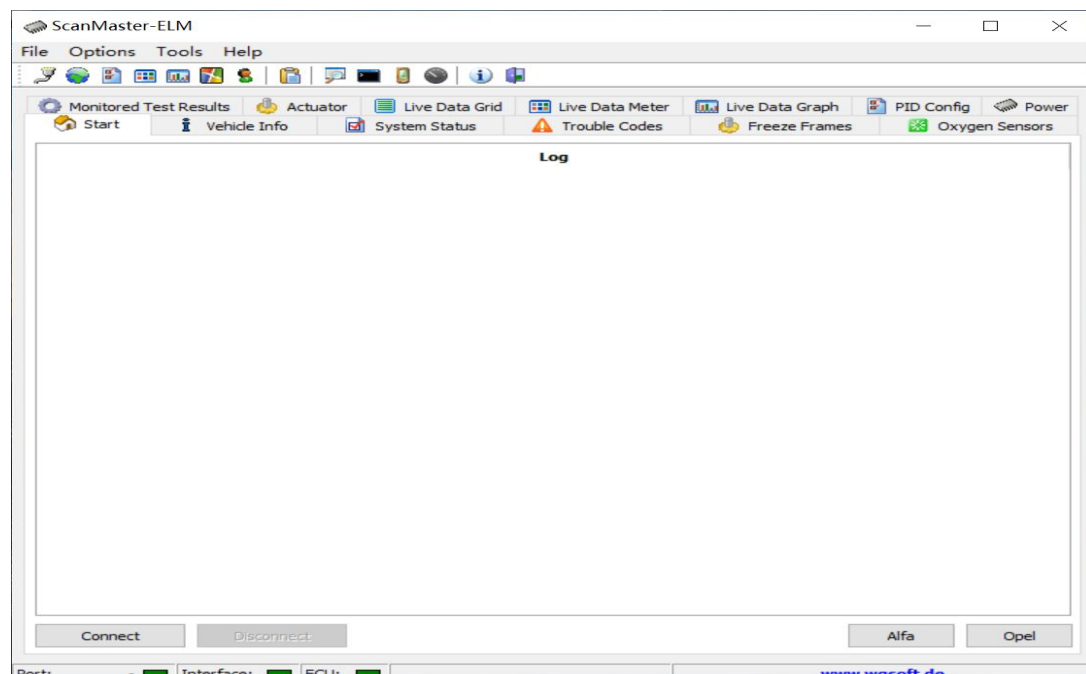
paste Install Code: FC82B5AC1D8ED it to get the registration



5. Click on the desktop  and enter the obtained registration



6. Then click on the desktop,  the interface appears, the activation is successful



ODIS

1. Due to the troublesome installation method of ODIS software, we will not install it. We cannot provide the installation method for the time being. If you can install this software, please share the installation steps with us.
2. After the ODIS software is installed, choose to switch to the VNCI NANO interface to use it.

